

---

# *Cutoutil Tool Holders*

2014



## Tool Holders

welcome to send us enquiry . we will always satisfy your request .

We are a professional Supplier specializing producing turning tools ,milling tools and u drill in Changsha city where is famous for carbide tools in China .

ny non-standard toolholders can be produced according to your request.

Cheap offer for ZCC ,Korloy ,Kyocera ,Sumitomo ,Mitsubishi ,Sandvik ,Lamina

etc . Welcome to enquiry [cutoutil@hanvtools.com](mailto:cutoutil@hanvtools.com)

**ORDER BY E-MAIL**

[www.hanvtools.com](http://www.hanvtools.com)

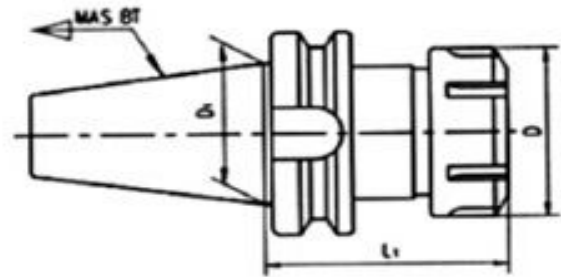




## Tool Holders

### BT\*ER Collets Holders

#### BT\*ER High-speed & Fine-balanced Collets Holder



MAS 403

20CrMnTi

≤0.005mm

≥12000rpm



Model	L1	D	D1
BT30*ER25-70	70	42	31.75
BT30*ER32-135	135	42	31.75
BT30*ER32-100	100	50	31.75
BT30*ER40-80	80	63	31.75
BT40*ER25-70	70	42	44.45
BT40*ER25-100	100	42	44.45
BT40*ER25-125	125	42	44.45
BT40*ER25-150	150	42	44.45
BT40*ER32-70	70	50	44.45
BT40*ER32-100	100	50	44.45
BT40*ER32-150	150	50	44.45
BT40*ER40-80	80	63	44.45
BT40*ER40-100	100	63	44.45
BT40*ER40-120	120	63	44.45
BT40*ER40-150	150	63	44.45
BT50*ER25-105	105	42	69.85
BT50*ER25-135	135	42	69.85
BT50*ER25-165	165	42	69.85
BT50*ER32-100	100	50	69.85
BT50*ER32-120	120	50	69.85
BT50*ER32-150	150	50	69.85
BT50*ER32-200	200	50	69.85
BT50*ER40-100	100	63	69.85
BT50*ER40-120	125	63	69.85
BT50*ER40-135	135	63	69.85
BT50*ER40-150	150	63	69.85



## Tool Holders

### ER Collets Chuck Set

#### BT\*ER Collets Chuck Set



BT Holders : MAS403;

ER Collets: DIN6499B

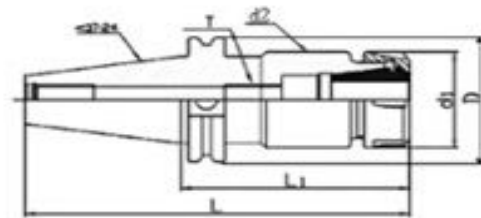
Model	Qty & Sizes	Bar Thread
BT30-60L*ER16	8PCS (3-10mm)	M12*1.75P
BT30-60L*ER32	6PCS (6-20mm)	M12*1.75P
	11PCS (4-20mm)	
	18PCS (3-20mm)	
BT40-70L*ER16	8PCS (3-10mm)	M12*1.75P
BT40-70L*ER32	6PCS (6-20mm)	M16*2.0P
	11PCS (4-20mm)	
	18PCS (3-20mm)	
BT40-80L*ER40	7PCS (6-25mm)	M16*2.0P
	15PCS (4-26mm)	
	23PCS (4-26mm)	
BT40-100L*ER16	8PCS (3-10mm)	M12*1.75P
BT40-100L*ER20	11PCS (3-13mm)	M12*1.75P
	6PCS (6-20mm)	
	18PCS (3-20mm)	
BT40-100L*ER20	11PCS (4-20mm)	M16*2.0P
	18PCS (3-20mm)	
	7PCS (6-25mm)	
BT40-100L*ER40	15PCS (4-26mm)	M16*2.0P
	23PCS (4-26mm)	
	6PCS (6-20mm)	
BT50-100L*ER32	11PCS (4-20mm)	M24*3.0P
	18PCS (3-20mm)	
	7PCS (6-25mm)	
BT50-100L*ER40	15PCS (4-26mm)	M24*3.0P
	23PCS (4-26mm)	
	6PCS (6-20mm)	
BT50-150L*ER32	11PCS (4-20mm)	M24*3.0P
	18PCS (3-20mm)	
	7PCS (6-25mm)	
BT50-150L*ER40	15PCS (4-26mm)	M24*3.0P
	23PCS (4-26mm)	
	7PCS (6-25mm)	



## Tool Holders

### CAT\*ER Collets Holders

#### CAT\*ER High-speed & Fine-balanced Collets Holder



ANSI B5.50

20CrMnTi

±0.005mm

≥12000rpm



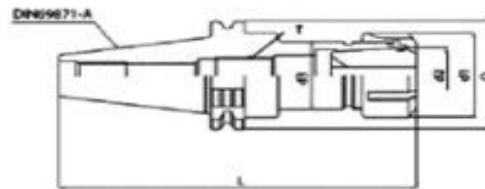
Model	L	L1	D	d1	d2	Thread
CAT40-ER16-2.76°	5.447°	2.76°	2.5°	1.102°	1.75°	M10*1.5P
CAT40-ER16-4°	6.687°	4°		1.102°		M10*1.5P
CAT40-ER16-6°	8.687°	6°		1.102°		M10*1.5P
CAT40-ER20-2.76°	5.447°	2.76°		1.339°		M12*1.75P
CAT40-ER20-4°	6.687°	4°		1.339°		M12*1.75P
CAT40-ER25-2.76°	5.447°	2.76°		1.654°		M16*2.0P
CAT40-ER25-4°	6.687°	4°		1.654°		M16*2.0P
CAT40-ER25-6°	8.687°	6°		1.654°		M16*2.0P
CAT40-ER32-2.76°	5.447°	2.76°		1.969°		M16*2.0P
CAT40-ER32-4°	6.687°	4°		1.969°		M16*2.0P
CAT40-ER32-6°	8.687°	6°		1.969°		M16*2.0P
CAT40-ER40-3.15°	5.837°	3.15°		2.480°		M20*2.5P
CAT40-ER40-4°	6.687°	4°		2.480°		M20*2.5P
CAT40-ER40-6°	8.687°	6°		2.480°		M20*2.5P
CAT40-ER50-4°	6.687°	4°	3.070°	M24*3.0P		
CAT50-ER16-4°	8°	4°	3.875°	1.102°	2.75°	M10*1.5P
CAT50-ER16-6°	10°	6°		1.102°		M10*1.5P
CAT50-ER20-4°	8°	4°		1.339°		M12*1.75P
CAT50-ER20-6°	10°	6°		1.339°		M12*1.75P
CAT50-ER25-4°	8°	4°		1.654°		M16*2.0P
CAT50-ER25-6°	10°	6°		1.654°		M16*2.0P
CAT50-ER32-4°	8°	4°		1.969°		M16*2.0P
CAT50-ER32-6°	10°	6°		1.969°		M16*2.0P
CAT50-ER40-4°	8°	4°		2.480°		M20*2.5P
CAT50-ER40-6°	10°	6°		2.480°		M20*2.5P
CAT50-ER50-4°	8°	4°		3.070°		M24*3.0P



## Tool Holders

### DAT\*ER Collets Holders

#### DAT\*ER High-speed & Fine-balanced Collets Holder



DIN69871-A

20CrMnTi

±0.005mm

≥12000rpm

DAT = SK



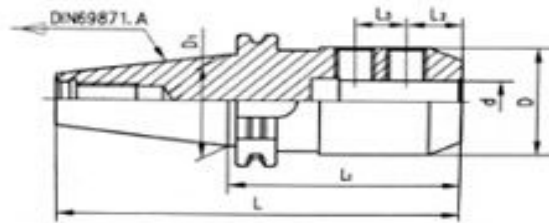
Model	L	L1	D	d1	d2	Thread
DAT40-ER1-80	148.4	80	63.55	19	11	M6*1.0P
DAT40-ER11-125	193.4	125	63.55	19	11	M6*1.0P
DAT40-ER16-70	138.4	70	63.55	28	16	M10*1.5P
DAT40-ER16-100	168.4	100	63.55	28	16	M10*1.5P
DAT40-ER16-150	218.4	150	63.55	28	16	M12*1.75P
DAT40-ER20-70	138.4	70	63.55	34	20	M12*1.75P
DAT40-ER20-100	168.4	100	63.55	34	20	M12*1.75P
DAT40-ER20-135	203.4	135	63.55	34	20	M12*1.75P
DAT40-ER20-160	228.4	160	63.55	34	20	M16*2.0P
DAT40-ER25-70	138.4	70	63.55	42	25	M16*2.0P
DAT40-ER25-100	168.4	100	63.55	42	25	M16*2.0P
DAT40-ER25-150	218.4	150	63.55	42	25	M16*2.0P
DAT40-ER32-70	138.4	70	63.55	50	32	M16*2.0P
DAT40-ER32-100	168.4	100	63.55	50	32	M16*2.0P
DAT40-ER32-135	203.4	135	63.55	50	32	M16*2.0P
DAT40-ER40-70	138.4	70	63.55	63	40	M16*2.0P
DAT40-ER40-100	168.4	100	63.55	50	32	M16*2.0P
DAT40-ER40-135	203.4	135	63.55	63	40	M10*1.5P
DAT50-ER16-10	201.4	100	97.5	28	16	M10*1.5P
DAT50-ER16-160	261.75	160	97.5	28	16	M12*1.75P
DAT50-ER20-100	201.75	100	97.5	34	20	M12*1.75P
DAT50-ER20-160	261.75	160	97.5	34	20	M16*2.0P
DAT50-ER25-70	171.75	70	97.5	42	25	M16*2.0P
DAT50-ER25-100	201.75	100	97.5	42	25	M16*2.0P
DAT50-ER25-150	251.75	150	97.5	42	25	M16*2.0P
DAT50-ER32-120	221.75	120	97.5	50	32	M16*2.0P
DAT50-ER32-160	261.75	160	97.5	50	32	M16*2.0P
DAT50-ER40-80	181.75	80	97.5	63	40	M16*2.0P
DAT50-ER40-120	221.75	120	97.5	63	40	M16*2.0P
DAT50-ER40-160	261.75	160	97.5	63	40	M16*2.0P
DAT50-ER50-80	181.75	80	97.5	78	50	M20*2.5P
DAT40-ER50-120	221.75	120	97.5	78	50	M20*2.5P



## Tool Holders

### Mill Arbors

#### DAT Side Lock End Mill Arbors



DIN69871A 20CrMnTi

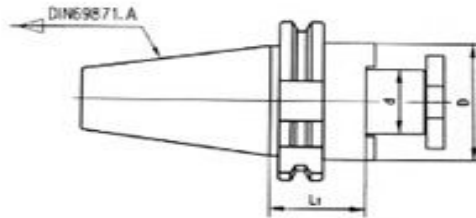
Model	L1	D	d	l2	l3
DAT30×SL6-50	50	25	6	18	-
DAT30×SL8-50	50	28	8	18	-
DAT30×SL10-50	50	35	10	20	-
DAT30×SL12-50	50	42	12	22.5	-
DAT30×SL16-63	63	48	16	24	-
DAT40×SL6-50	50	25	6	18	-
DAT40×SL8-50	50	28	8	18	-
DAT40×SL10-50	50	35	10	20	-
DAT40×SL12-50	50	42	12	22.5	-
DAT40×SL16-63	63	48	16	24	-
DAT40×SL20-63	63	52	20	25	-
DAT40×SL25-100	100	65	25	24	25
DAT40×SL32-100	100	72	32	24	28
DAT50×SL6-63	63	25	6	18	-
DAT50×SL8-63	63	28	8	18	-
DAT50×SL10-63	63	35	10	20	-
DAT50×SL12-63	63	42	12	22.5	-
DAT50×SL16-63	63	48	16	24	-
DAT50×SL20-63	63	52	20	25	-
DAT50×SL25-80	80	65	25	24	25
DAT50×SL32-100	100	72	32	24	28
DAT50×SL40-100	100	90	40	30	32
DAT50×SL50-125	125	100	50	35	35



## Tool Holders

### Mill Arbors

#### DAT Shell End Mill Arbors

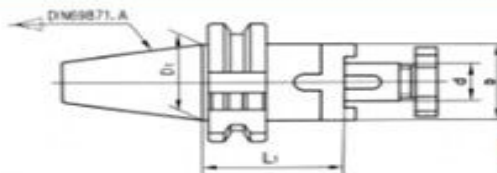


DIN69871A

20CrMnTi

Model	L1	D	d
DAT40×FMB16-40	40	38	16
DAT40×FMB22-40	40	48	22
DAT40×FMB27-40	40	58	27
DAT40×FMB32-50	50	78	32
DAT40×FMB40-50	50	88	40
DAT50×FMB16-40	40	38	16
DAT50×FMB22-40	40	48	22
DAT50×FMB27-40	40	58	27
DAT50×FMB32-40	40	78	32
DAT50×FMB40-50	50	88	40

#### DAT Combine End Mill Arbors



DIN69871A

20CrMnTi

Model	L1	D	d
DAT30×CEM16-50	50	32	16
DAT30×CEM22-50	50	40	22
DAT30×CEM27-55	55	48	27
DAT30×CEM32-60	60	58	32
DAT40×CEM16-55	55	32	16
DAT40×CEM22-55	55	40	22
DAT40×CEM27-55	55	48	27
DAT40×CEM32-60	60	58	32
DAT40×CEM40-60	60	70	40
DAT40×CEM16-55	55	32	16
DAT40×CEM22-55	55	40	22
DAT40×CEM27-55	55	48	27
DAT40×CEM32-55	55	58	32
DAT40×CEM40-60	60	70	40
DAT40×CEM50-70	70	70	50





## Tool Holders

### ER Collets Extension Bar

#### ER Collets Extension Bar



20CrMnTi

≥12000rpm

Model	L	L1	D	D1
C16*ER16-50	35.1	50	16	28
C16*ER16-100	35.1	100	16	28
C16*ER16-150	35.1	150	16	28
C20*ER16-50	35.1	50	20	28
C20*ER16-100	35.1	100	20	28
C20*ER16-150	35.1	150	20	28
C20*ER20-60	40.5	60	20	34
C20*ER20-120	40.5	120	20	34
C20*ER20-180	40.5	180	20	34
C20*ER20-140	35.1	140	20	34
C20*ER25-50	51	50	20	42
C20*ER25-100	51	100	20	42
C20*ER32-50	51.5	50	20	50
C20*ER32-100	51.5	100	20	50
C25*ER16-150	35.1	150	25	26
C25*ER20-140	35.1	140	25	34
C25*ER25-50	51	50	25	42
C25*ER25-100	51	100	25	42
C25*ER32-50	51.5	50	25	50
C25*ER40-50	65	50	25	63
C32*ER25-50	51	50	32	42
C32*ER32-60	51.5	60	32	50
C32*ER40-50	65	50	32	63



## Tool Holders

### ER Collets Extension Bar Set

#### ER Collets Extension Bar Set



Model		Qty & Clamping	Back Bar Thread	Wt.	
C16	50L* ER11	5PCS (3-7mm)	M 10	0.6	
	100L* ER11	5PCS (3-7mm)		0.7	
C20	100L* ER16	8PCS (3-10mm)	M 12	1.15	
	150L* ER16	8PCS (3-10mm)		1.25	
	200L* ER20	11PCS (3-13mm)		1.25	
	150L* ER20	11PCS (3-13mm)		1.35	
	100L* ER25	7PCS (6-16mm)		M 12	1.8
		15PCS (2-16mm)			2.5
		7PCS (6-16mm)			1.9
150L* ER25	11PCS (3-13mm)	2.65			
C25	100L* ER16	8PCS (3-10mm)	M 12	1.25	
	150L* ER16	8PCS (3-10mm)		1.35	
	100L* ER20	11PCS (3-13mm)		1.4	
	100L* ER25	7PCS (6-16mm)		M 12	1.9
		15PCS (2-16mm)			2.5
	150L* ER25	7PCS (6-16mm)		M 12	2
		15PCS (2-16mm)			2.65
80L* ER32	6PCS (3-20mm)	M 16	2.7		
16PCS (3-20mm)			4.1		
C32	60L* ER25	7PCS (6-16mm)	M 12	2	
		15PCS (2-16mm)		2.5	
	100L* ER32	6PCS (3-20mm)	M 16	2.9	
		11PCS (3-13mm)		3.2	
		18PCS (4-20mm)		4.3	
		7PCS (6-16mm)		4.6	
100L* ER40	15PCS (2-16mm)	M 16	6.1		
	23PCS (4-26mm)		7.3		
	6PCS (3-20mm)		3.2		
C40	100L* ER32	11PCS (3-13mm)	M 16	3.5	
		18PCS (4-20mm)		4.6	
		7PCS (6-16mm)		5	
	100L* ER40	15PCS (2-16mm)		6.5	
		23PCS (4-26mm)		7.6	
		6PCS (3-20mm)		3.2	

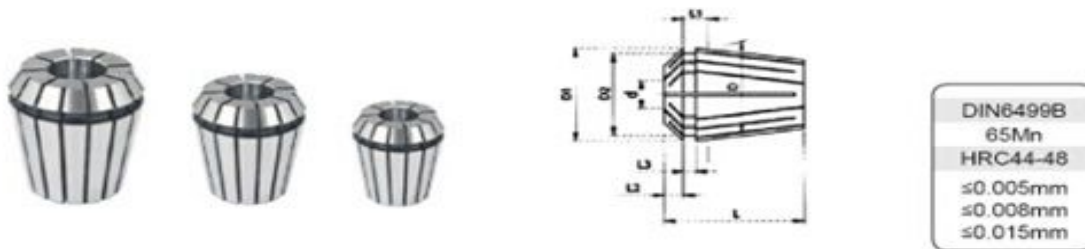


## Tool Holders

### ER Collets

#### ER Spring Collets

ER Collets are applied for a variety of processing including drilling, milling, tapping & grinding



Model	European Ref. No	D	D1	D2	L	L1	L2	L3
ER8		8	8.5	6.5	13.5	2.7	1.5	1.2
ER11	424E	11	11.5	9.5	18	3.8	2.5	2
ER16	426E	16	17	13.8	27.5	6.26	4	2.7
ER20	426E	20	21	17.4	31.5	6.36	4.8	2.8
ER25	430E	25	26	22	34	6.66	5	3.1
ER32	470E	32	33	29.2	40	7.16	5.5	3.6
ER40	472E	40	41	36.2	46	7.66	7	4.1
ER50	477E	50	52	46	60	12.6	8.5	5.5

#### ER Collets Set

ER8	9PCS	1-5mm (1, 1.5, 2, 2.5, 3, 3.5, 4, 4.5mm)
ER11	5PCS	3-7mm (3, 4, 5, 6, 7mm) if 7PCS, includes 1&2mm
ER16	8PCS	3-10mm (3, 4, 5, 6, 7, 8, 9, 10mm)
ER20	6PCS	3-13mm (3, 4, 5, 8, 10, 13mm)
	11PCS	3-13mm (3, 4, 5, 6, 7, 8, 9, 10, 11, 12, 13mm)
ER25	7PCS	4-16mm (4, 6, 8, 10, 12, 14, 16mm)
	15PCS	2-12mm (2, 3, 4, 5, 6, 7, 8, 9, 10, 11, 12, 13, 14, 15, 16mm)
ER32	6PCS	6-20mm (6, 8, 10, 12, 16, 20mm)
	11PCS	4-20mm (4, 5, 6, 8, 10, 12, 13, 15, 16, 18, 20mm)
	18PCS	3-20mm (3, 4, 5, 6, 7, 8, 9, 10, 11, 12, 13, 14, 15, 16, 17, 18, 19, 20mm)
ER40	7PCS	6-25mm (6, 8, 10, 12, 16, 20, 25mm)
	15PCS	4-26mm (4, 5, 6, 8, 10, 12, 13, 15, 16, 18, 20, 21, 23, 25, 26mm)
	23PCS	4-26mm (4, 5, 6, 7, 8, 9, 10, 11, 12, 13, 14, 15, 16, 17, 18, 19..., 26mm)
ER50	12PCS	10-34mm (10, 12, 14, 16, 18, 20, 22, 24, 26, 28, 30, 32, 34mm)



## Tool Holders

### ER Collets Set

#### The Clamping Capacity of ER Collets

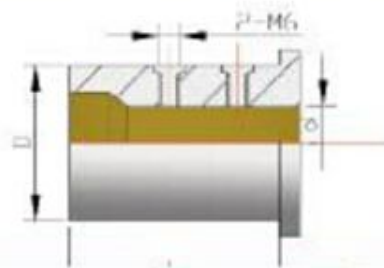
ER8(mm)	ER11(mm)	ER16(mm)	ER20(mm)	ER25(mm)	ER32(mm)	ER40(mm)	ER50(mm)
1-0.5	3-2.5	3-2	3-2	3-2	3-2	4-3	12-10
1.5-1	3.5-3	4-3	4-3	4-3	4-3	5-4	14-12
2-1.5	4-3.5	5-4	5-4	5-4	5-4	6-5	16-14
2.5-2	4.5-4	6-5	6-5	6-5	6-5	7-6	18-16
3-2.5	5-4.5	7-6	7-6	7-6	7-6	8-7	20-18
3.5-3	5.5-5	8-7	8-7	8-7	8-7	9-8	22-20
4-3.5	6-5.5	9-8	9-8	9-8	9-8	10-9	24-22
4.5-4	6.5-6	10-9	10-9	10-9	10-9	11-10	26-24
5-4.5	7-6.5		11-10	11-10	11-10	12-11	28-26
			12-11	12-11	12-11	13-12	30-28
			13-12	13-12	13-12	14-13	32-30
				14-13	14-13	15-14	34-32
				15-14	15-14	16-15	
				16-15	16-15	17-16	
					17-16	18-17	
					18-17	19-18	
					19-18	20-19	
					20-19	21-20	
						22-21	
						23-22	
						24-23	
						25-24	
						26-25	



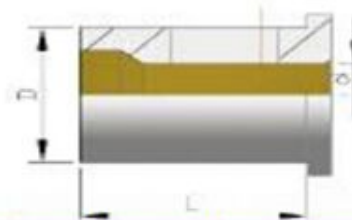


## Tool Holders

### Reduction Sleeve for Boring Bar Holder



Order No.	Model	d	D	L
SL2506	25-06,	6	25	46
SL2508	25-08,	8	25	46
SL2510	25-10,	10	25	46
SL2512	25-12,	12	25	46
SL3206	32-06,	6	32	56
SL3208	32-08,	8	32	56
SL3210	32-10,	10	32	56
SL3212	32-12,	12	32	56
SL4006	40-06,	6	40	71
SL4008	40-08,	8	40	71
SL4010	40-10,	10	40	71
SL4012	40-12,	12	40	71



Order No.	Model	d	D	L
SL2516	25-16,	16	25	46
SL2520	25-20,	20	25	46
SL3216	32-16,	16	32	56
SL3220	32-20,	20	32	56
SL3225	32-25,	25	32	56
SL4016	40-16,	16	40	71
SL4020	40-20,	20	40	71
SL4025	40-25,	25	40	71
SL4032	40-32,	32	40	71



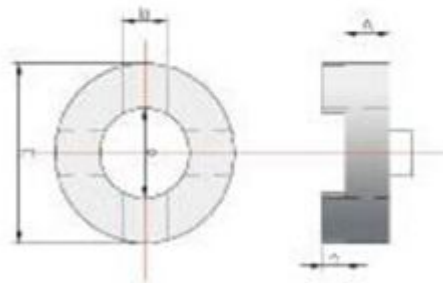
## Tool Holders

### HSK Coolant Tube



Order No.	Model	d	D	L
CT32	HSK32	6	M10X1	26
CT40	HSK40	8	M12X1	29.5
CT50	HSK50	10	M16X1	33
CT63	HSK63	12	M18X1	34.5
CT80	HSK80	14	M20X1.5	40
CT100	HSK100	16	M24X1.5	44

### Clutch Drive Ring



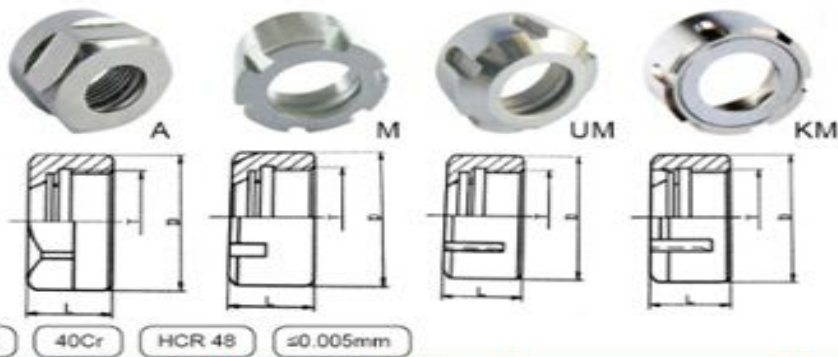
Order No.	d	D	A	b	h
CDR16	16	32	10	8	5
CDR22	22	40	12	10	5.6
CDR17	27	46	12	12	6.3
CDR32	32	55	14	14	5.6
CDR40	40	68	14	16	8



## Tool Holders

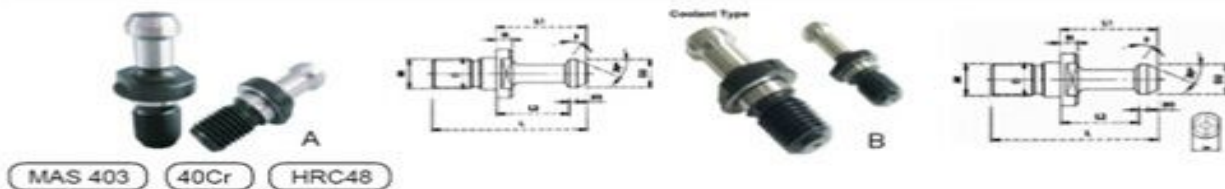
### ER Nuts

#### ER Nuts



Type	Model	D	L	Thread	Wt.
A	ER11	19	11.3	M14* 0.75P	0.02
	ER16	28	17.5	M22* 1.5P	0.05
	ER20	34	19	M25* 1.5P	0.1
M	ER8	12	10.8	M10* 0.75P	0.005
	ER11	16	12	M13* 1.75P	0.01
	ER16	22	18	M19* 1.0P	0.05
	ER20	28	19	M24* 1.0P	0.05
UM	ER25	35	20	M30* 1.0P	0.08
	ER25	42	20	M32* 1.5P	0.14
	ER32	50	22.5	M40* 1.5P	0.2
	ER40	63	25.5	M50* 1.5P	0.3
KM	ER50	78	35.5	M64* 2.0P	0.5
	ER25	42	22.5	M32* 1.5P	0.13
	ER32	50	26	M40* 1.5P	0.18
	ER40	63	29	M50* 1.5P	0.3
	ER50	78	40	M54* 2.0P	0.1

#### Pill Studs



Model	D	M	L	H	H1	∅
BT30	12.5	M12	43	5	2.5	45°
BT40	17	M16	60	6	3	45°
BT50	25	M24	85	10	5	45°



## Tool Holders

### ER Wrenches

#### The Clamping Capacity of ER Collets



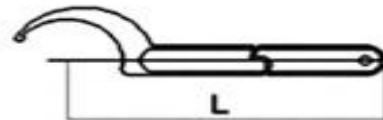
A



Model	B	L	Clamping Nut
WA- 40	40	120	ER11- A
WA- 53	53	140	ER16- A
WA- 60	60	160	ER20- A



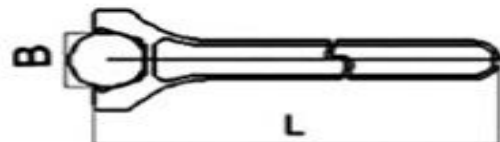
TG



Model	B	L	Clamping Nut
WTG- 42	38- 42	168	ER25-B ER25-T2
WTG- 52	45- 52	190	ER32-B ER32-T2
WTG- 63	55- 63	210	ER40-B ER40-T2
WTG- 85	78- 85	240	ER50-B ER50-T2



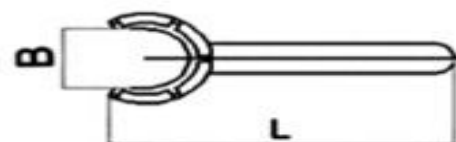
UM/KM



Model	B	L	Clamping Nut
WUK- 37	37	210	ER25-B ER25-T2
WUK- 45	45	250	ER32-B ER32-T2
WUK- 58	58	290	ER40-B ER40-T2
WUK- 72	72	350	ER50-B ER50-T2



M



Model	B	L	Clamping Nut
WM- 13	13	75	ER8- M
WM- 17	17	95	ER11- M
WM- 22.5	22.5	117	ER16- M
WM- 28.5	28.5	129	ER20- M
WM- 35.5	35.5	142.5	ER25- M

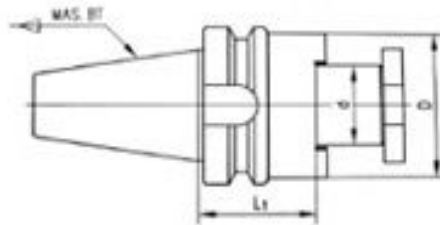




## Tool Holders

### Mill Arbors

#### BT-FMA Mill Arbors



MAS403

20CrMnTi

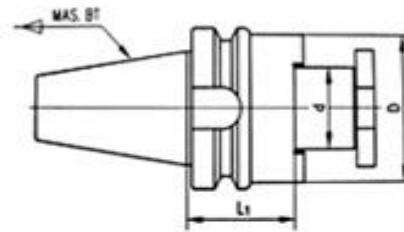
Model	L1	D	d
BT30*FMA25.4-45	45	50	25.4
BT40*FMA25.4-45	45	50	25.4
BT40*FMA25.4-80	90	50	25.4
BT40*FMA31.75-45	45	60	31.75
BT40*FMA31.75-75	75	60	31.75
BT40*FMA38.1-60	60	80	38.1
BT50*FMA25.4-45	75	50	25.4
BT50*FMA25.4-90	90	50	25.4
BT50*FMA25.4-150	150	50	25.4
BT50*FMA31.75-45	45	60	31.75
BT50*FMA31.75-75	75	60	31.75
BT50*FMA31.75-105	105	60	31.75
BT50*FMA38.1-45	45	80	38.1
BT50*FMA38.1-75	75	80	38.1
BT50*FMA50.8-45	45	98	50.8
BT50*FMA50.8-75	75	98	50.8
BT50*FMA47.625-75	75	128.57	47.625



## Tool Holders

### Mill Arbors

#### BT-FMB Arbors



MAS403

20CrMnTi

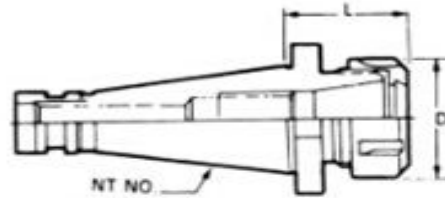
Model	L1	D	d
BT30*FMB22-45	45	50	22
BT30*FMB22-60	60	50	22
BT30*FMB27-45	45	60	27
BT30*FMB32-45	45	78	32
BT40*FMB22-45	45	48	22
BT40*FMB22-60	60	48	22
BT40*FMB22-100	100	48	22
BT40*FMB22-150	150	48	22
BT40*FMB22-200	200	48	22
BT40*FMB27-45	45	60	37
BT40*FMB27-60	60	60	37
BT40*FMB27-90	90	60	37
BT40*FMB27-105	105	60	37
BT40*FMB32-45	45	78	32
BT40*FMB32-60	60	78	32
BT40*FMB40-60	60	89	40
BT50*FMB22-45	45	50	22
BT50*FMB22-90	90	50	22
BT50*FMB22-150	150	50	22
BT50*FMB22-200	200	50	22
BT50*FMB22-250	250	50	22
BT50*FMB27-50	50	60	27
BT50*FMB27-90	90	60	27
BT50*FMB27-150	150	60	27
BT50*FMB27-200	200	60	27
BT50*FMB27-250	250	60	27
BT50*FMB32-50	50	78	32
BT50*FMB32-90	90	78	32
BT50*FMB40-50	50	89	40
BT50*FMB40-90	90	89	40
BT50*FMB40-105	105	98	40
BT50*FMB60-75	75	140	60



## Tool Holders

### NT\*ER Collets Holders

#### NT\*ER Collets Holder



DIN2080

20CrMnTi



#### NT\*ER Collets Chuck Set



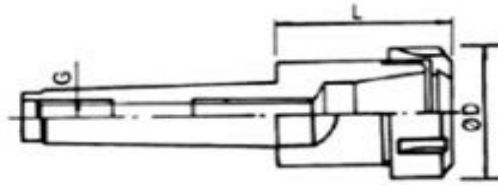
Model	Qty & Clamping	Back Bar Thread	W.t
NT30*ER25	7PCS (2-16mm)	M12* 1.75P	2.4
	15PCS (4-16mm)		2.8
NT30*ER32	6PCS (6-20mm)	M12* 1.75P	2.8
	11PCS (4-20mm)		3.2
	18PCS (3-20mm)		4.2
NT30*ER40	7PCS (6-25mm)	M12* 1.75P	4.6
	15PCS (4-26mm)		6
	23PCS (4-26mm)		7.3
NT40*ER25	7PCS (2-16mm)	M16* 2.0P	3
	15PCS (4-16mm)		3.3
NT40*ER32	6PCS (6-20mm)	M12* 1.75P	3.4
	11PCS (4-20mm)		3.8
	18PCS (3-20mm)		4.8
NT40*ER40	7PCS (6-25mm)	M16* 2.0P	5.2
	15PCS (4-20mm)		6.9
	23PCS (4-26mm)		8.2
NT50*ER32	6PCS (6-20mm)	M24* 3.0P	5.3
	11PCS (4-20mm)		5.5
	18PCS (3-206mm)		6.5
NT50*ER40	7PCS (6-25mm)	M24* 3.0P	7
	15PCS (4-26mm)		8.5
	23PCS (4-26mm)		9.8



## Tool Holders

### MT\*ER Collets Holders

#### MT\*ER Collets Holder



DIN228

20CrMnTi



#### MT\*ER Collets Chuck Set



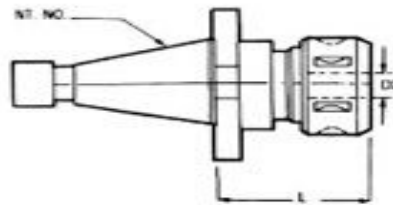
Model	Qty & Clamping	Back Bar Thread	Wt.
MT2*ER16	9PCS (3-10mm)	M10* 1.5P	1
MT2*ER20	11PCS (3-13mm)		1.2
MT2*ER25	7PCS (6-16mm)		1.3
	15PCS (2-16mm)	2.4	
MT3*ER16	8PCS (3-10mm)	M12* 1.75P	1.1
MT3*ER20	11PCS (3-13mm)		1.3
MT3*ER25	7PCS (4-16mm)		2.1
	15PCS (2-16mm)		2.5
MT3*ER32	6PCS (6-20mm)	M12* 1.75P	2.7
	11PCS (4-20mm)		3
	18PCS (3-20mm)		4.1
MT3*ER40	7PCS (6-25mm)	M12* 1.75P	4.5
	15PCS (4-26mm)		6
	23PCS (4-26mm)		7.2
MT40*ER32	6PCS (6-20mm)	M16* 2.0P	2.9
	11PCS (4-20mm)		3.2
	18PCS (3-20mm)		4.3
MT40*ER40	7PCS (6-25mm)	M16* 2.0P	4.6
	15PCS (4-26mm)		6.1
	23PCS (4-26mm)		7.3
MT50*ER40	7PCS (6-25mm)	M20* 2.5P	5.4
	15PCS (4-26mm)		6.9
	23PCS (4-26mm)		6.2



## Tool Holders

### NT\*OZ Collets Holders

#### NT\*OZ Collets Holders



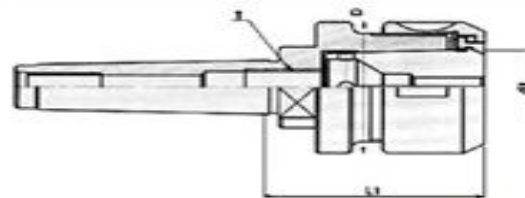
DIN2080

20CrMnTi

≥12000rpm

Model	D2	L	Collets	Back Bar Thread
NT30-OZ25-70	3- 25	70	OZ25	M12*1.75P
NT30-OZ32-100	6- 32	100	OZ32	M12*1.75P
NT40-OZ25-70	3- 25	70	OZ25	M16*2.0P
NT40-OZ32-70	6- 32	70	OZ32	M16*2.0P
NT50-OZ25-80	3- 25	80	OZ25	M24*3.0P
NT50-OZ32-80	6- 32	80	OZ32	M24*3.0P

#### MT\*OZ Collets Holders



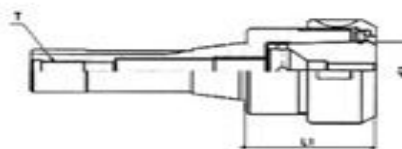
MAS403

20CrMnTi

≥12000rpm

Model	D2	L1	Colletes	Back Bar Thread
MT3-OZ25-60	3- 25	60	OZ25	M10*1.0P
MT4-OZ25-60	3- 25	60	OZ28	M16*2.0P
MT5-OZ25-75	3- 25	75	OZ28	M24*3.0P
MT5-OZ25-75	6- 32	75	OZ32	M24*3.0P

#### R8\*OZ Collets Holders



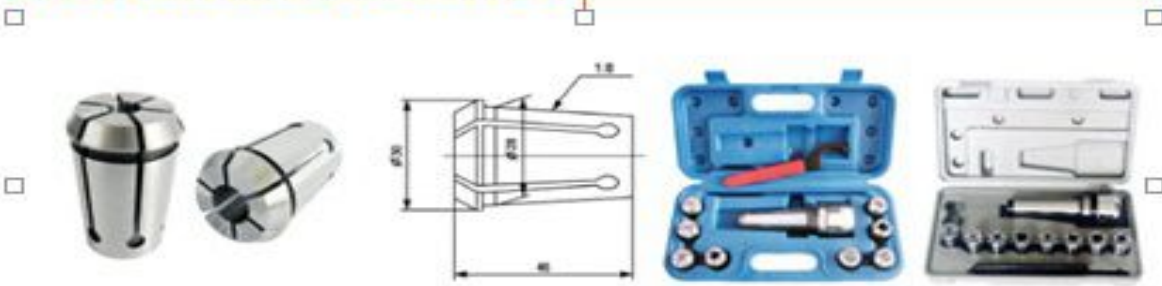
Model	D2	L1	Colletes	Back Bar Thread
R8-OZ25-60	3- 25	60	OZ25	7/16-20UNF M12*1.75P



## Tool Holders

### 7316B Collets & Chuck Set

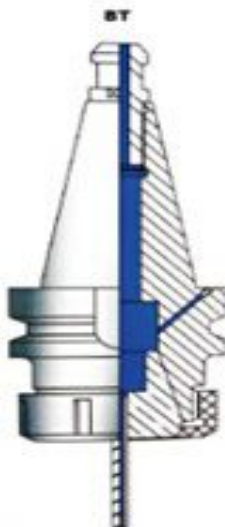
#### 7316B Collets & Chuck Set



65Mn

Collets Taper 1:8

Model	Hole Size		PCS/ Set	Shshk	Wt
	mm	in			
J7316 B/R8			8	R 8	3.058
J7316 B/NT30	4,	1/8"		NT 30	3.373
J7316 B/NT40	5,	3/16"		NT 40	3.708
J7316 B/NT50	6,	1/4"		NT 50	5.11
J7316 B/MT2	8,	5/16"		MT 2	3.52
J7316 B/MT3	10,	3/8"		MT 3	3.752
J7316 B/MT4	12,	1/2"		MT 4	4.646
J7316 B/MT5	14,	9/16"		MT 5	3.43
J7316 B/1"	16,	5/18"		1"	3.8
J7316 B/1-1/4"				1- 1/4"	4.506





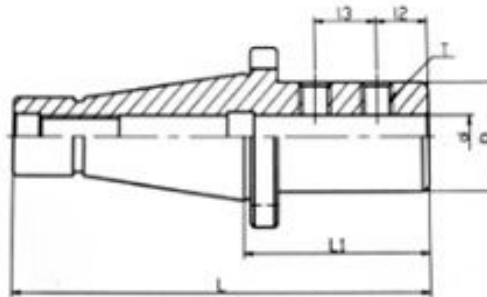
## Tool Holders

### Mill Arbors

#### NT Side Lock End Mill Arbors



DIN2080



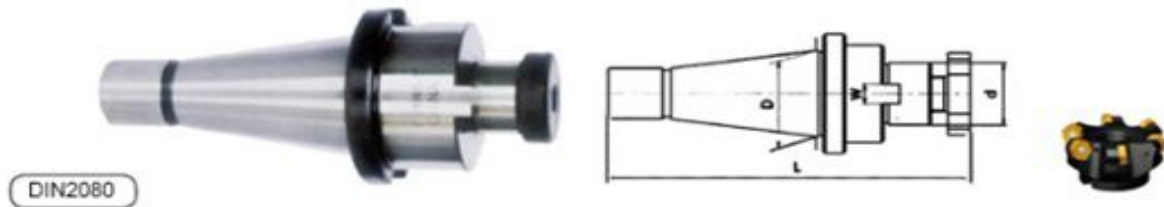
Model	L1	D	d	l2	l3
DAT30×SL6-50	50	25	6	18	-
DAT30×SL8-50	50	28	8	18	-
DAT30×SL10-50	50	35	10	20	-
DAT30×SL12-50	50	42	12	22.5	-
DAT30×SL16-63	63	48	16	24	-
DAT40×SL6-50	50	25	6	18	-
DAT40×SL8-50	50	28	8	18	-
DAT40×SL10-50	50	35	10	20	-
DAT40×SL12-50	50	42	12	22.5	-
DAT40×SL16-63	63	48	16	24	-
DAT40×SL20-63	63	52	20	25	-
DAT40×SL25-100	100	65	25	24	25
DAT40×SL32-100	100	72	32	24	28
DAT50×SL6-63	63	25	6	18	-
DAT50×SL8-63	63	28	8	18	-
DAT50×SL10-63	63	35	10	20	-
DAT50×SL12-63	63	42	12	22.5	-
DAT50×SL16-63	63	48	16	24	-
DAT50×SL20-63	63	52	20	25	-
DAT50×SL25-80	80	65	25	24	25
DAT50×SL32-100	100	72	32	24	28
DAT50×SL40-100	100	90	40	30	32
DAT50×SL50-125	125	100	50	35	35



## Tool Holders

### Mill Arbors

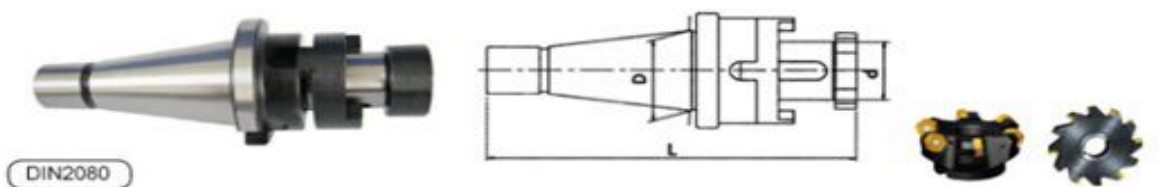
#### NT Shell End Mill Arbors



DIN2080

Model	D	d	W	L
NT30-FMB16	31.75	16	8	126
NT30-FMB22		22	10	129
NT30-FMB27		27	12	134
NT30-FMB32		32	14	141
NT40-FMB22	44.45	22	10	156
NT40-FMB27		27	12	159
NT40-FMB32		32	14	178
NT40-FMB40		40	16	182
NT50-FMB22	69.85	22	10	208
NT50-FMB27		27	12	211
NT50-FMB32		32	14	215
NT50-FMB40		40	16	219

#### NT Combine End Mill Arbors



DIN2080

Model	Shank	d	L	Wt
NT30×13	ISO30	13	120	0.608
NT30×16	ISO30	16	131	0.746
NT30×22	ISO30	22	132	1.038
NT30×27	ISO30	27	135	1.474
NT30×32	ISO30	32	151	2.101
NT40×16	ISO40	16	168	1.3
NT40×22	ISO40	22	171	2.042
NT40×27	ISO40	27	174	2.69
NT40×32	ISO40	32	178	2.679
NT50×16	ISO50	16	182	3.115
NT50×22	ISO50	22	189	3.84
NT50×27	ISO50	27	205	3.852
NT50×32	ISO50	32	208	4.402
NT50×40	ISO50	40	211	5.276

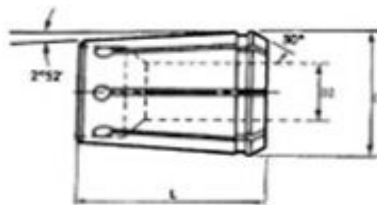




## Tool Holders

### ER Collets Extension Bar

#### ER Collets Extension Bar



DIN6388
65Mn
≤0.015mm
Taper : 1:10

Model	D1	L	D2	
OZ25	35.5	52	Metric	3, 4, 5, 6, 7, 8, 9, 10, 11, 12, 13, 14, 15, 16, 17, 18, 19, 20, 21, 22, 23, 24, 25
			Inch	1/8", 3/16", 1/4", 5/16", 3/8", 7/16", 1/2", 9/16", 5/8", 11/16", 3/4", 13/16", 7/8", 15/16", 1"
OZ32	44	60	Metric	6, 7, 8, 9, 10, 11, 12, 13, 14, 15, 16, 17, 18, 19, 20, 21, 22, 23, 24, 25, 26, 27, 28, 29, 30, 31, 32
			Inch	1/4", 5/16", 3/8", 7/16", 1/2", 9/16", 5/8", 11/16", 3/4", 13/16", 7/8", 15/16", 1", 1.1/8", 1.1/4"

#### OZ Collets Sets (OZ Collets = EOCA Collets)



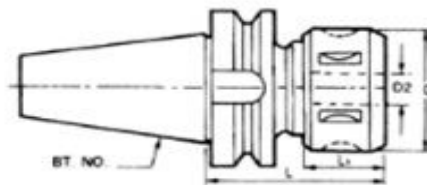
Model	D1	L	D2	
OZ25	7PCS /SET		Metric	6, 8, 10, 12, 16, 20, 25mm
			Inch	1/4", 5/16", 3/8", 1/2", 5/8", 3/4", 1"
			Metric	3, 4, 5, 6, 7, 8, 9, 10, 11, 12, 13, 16, 18, 20, 25mm
			Inch	1/8", 3/16", 1/4", 5/16", 3/8", 7/16", 1/2", 9/16", 5/8", 11/16", 3/4", 13/16", 7/8", 15/16", 1"
OZ32	8PCS /SET		Metric	6, 8, 10, 12, 16, 20, 25, 32mm
			Inch	1/4", 5/16", 3/8", 1/2", 5/8", 3/4", 1", 1-1/4"
			Metric	6, 7, 8, 9, 10, 11, 12, 13, 16, 18, 20, 25, 30, 32mm
			Inch	1/4", 5/16", 3/8", 7/16", 1/2", 9/16", 5/8", 11/16", 3/4", 13/16", 7/8", 15/16", 1", 1-1/8", 1-1/4"



## Tool Holders

### OZ Collets Holders

#### BT \*OZ Collets Holders



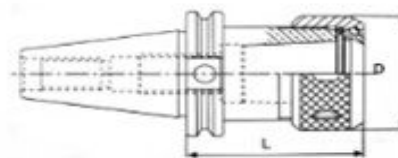
MAS403

20CrMnTi

≥12000rpm

Model	D2	L	D	L1	Collets	Back Bar Thread
BT40- OZ25-80	3-25.	80	60	30	OZ25	M16* 2.0P
BT40- OZ25-120	3-25.	120	60	30	OZ25	
BT40- OZ32-80	6-32	80	72	33	OZ32	
BT40- OZ32-105	6-32	150	72	33	OZ32	
BT50- OZ25-90	3-25.	90	60	30	OZ25	M24* 3.0P
BT50- OZ25-130	3-25.	130	60	30	OZ25	
BT50- OZ32-105	6-32	105	72	33	OZ32	
BT50- OZ32-150	6-32	150	72	33	OZ32	

#### CAT\*OZ Collets Holders



ANSI B5.50

20CrMnTi

≥12000rpm

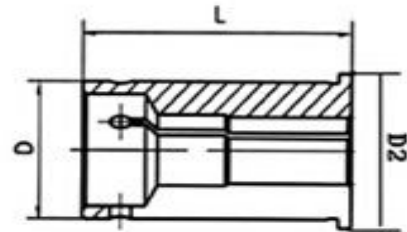
Model	D	L	Collets	Back Bar Thread
CAT40- OZ25-2.25"	2.36"	2.25"	OZ25	M16* 2.0P
CAT40- OZ25-4.00"	2.36"	4.00"	OZ25	
CAT40- OZ32-2.25"	2.83"	2.25"	OZ32	
CAT40- OZ32-4.00"	2.83"	4.00"	OZ32	
CAT50- OZ25-2.25"	2.36"	2.25"	OZ25	M24* 3.0P
CAT50- OZ25-4.00"	2.36"	4.00"	OZ25	
CAT50- OZ32-2.25"	2.83"	2.25"	OZ32	
CAT50- OZ32-4.44"	2.83"	4.00"	OZ32	



## Tool Holders

### Straight Collets

#### Straight Collets

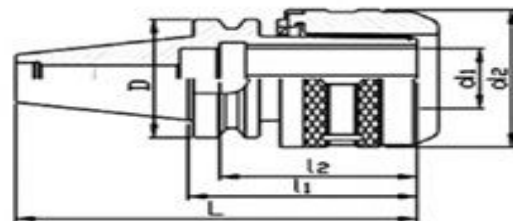


65Mn

HRC:44~48

Model	Qty	Inside Diameter	D	D2	L	Wt
C20	5PCS	6, 8, 10, 12, 16mm	20	25	52	0.1
C25	6PCS	6, 8, 10, 12, 16, 20mm	25	31	60	0.18
C32	7PCS	6, 8, 10, 12, 16, 20, 25mm	32	37	73	0.22
C42	8PCS	6, 8, 12, 16, 20, 25, 32mm	42	48	80	0.35

#### Straight Collets Chuck Set



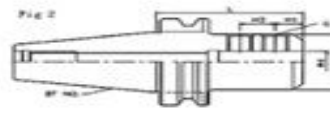
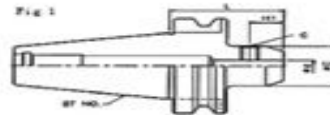
Model	D2	L1	Collets	Back Bar Thread
MT4	SC32-75L	M16* 2.0P		2.05 KGS
MT4	SC32-75L	M24* 3.0P		3.5
	SC42-110L			5
R8	SC20-85L	7/16" -20		2.5
NT30	SC20-65L	M12* 1.75P		3
NT40	SC20-70L	M16* 2.0P		3.5
	SC32-95L			4
NT50	SC32-100L	M24* 3.0P		4.5
	SC42-110L			6
BT30	SC20-85L	M12* 1.75P		2.5
	SC25-85L			3
BT40	SC20-80L/120L			3/ 4
	SC25-90L/135L	M16* 2.0P		4.5/ 5
	SC32-105L/150L			3/ 3.5
BT50	SC20-105L/150L			3/ 4.5
	SC32-110L/150L	M24* 3.0P		5.2/ 7
	SC42-115L/150L			7/ 8.5



## Tool Holders

### Mill Arbors

#### BT Side Lock End Mill Arbors



MAS403 20CrMnTi

Model	Fig	L	C	H1	H2
BT30*SL6-50	1	50	25	18	-
BT30*SL8-50	1	50	28	18	-
BT30*SL10-50	1	50	35	20	-
BT30*SL12-50	1	50	42	22.5	-
BT30*SL16-63	1	63	48	24	-
BT30*SL20-70	1	70	52	25	-
BT40*SL6-50	1	50	25	18	-
BT40*SL8-50	1	50	28	18	-
BT40*SL10-63	1	63	35	20	-
BT40*SL12-63	1	63	42	22.5	-
BT40*SL16-63	1	63	48	24	-
BT40*SL20-63	1	63	52	25	-
BT40*SLA25-90	2	90	65	24	25
BT40*SLA32-100	2	100	72	24	28
BT50*SL6-63	1	63	25	18	-
BT50*SL8-63	1	63	28	18	-
BT50*SL10-63	1	63	35	20	-
BT50*SL12-80	1	80	42	22.5	-
BT50*SL16-80	1	80	48	24	-
BT50*SL20-80	1	90	52	25	-
BT50*SLA25-100	2	100	65	24	25
BT50*SLA32-105	2	105	72	24	28
BT50*SLA40-110	2	110	90	30	32

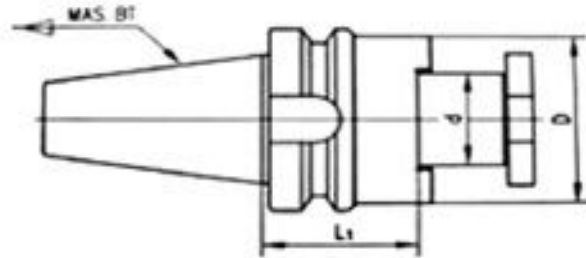




## Tool Holders

### Mill Arbors

#### BT-FMC Mill Arbors



MAS403

20CrMnTi



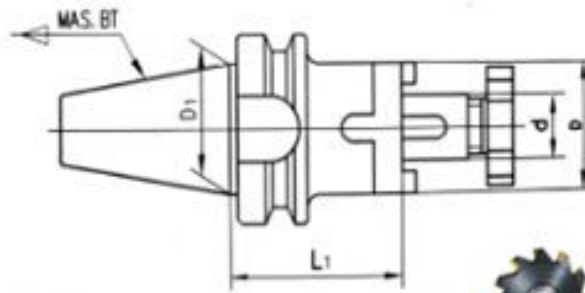
Model	L1	D	d
BT30*FMC22-40	40	45	22
BT40*FMC22-45	45	45	22
BT40*FMC22-90	90	45	22
BT40*FMC27-60	60	70	27
BT40*FMC27-90	90	70	27
BT40*FMC32-60	60	85	32
BT40*FMC32-75	75	85	32
BT50*FMC22-60	60	45	22
BT50*FMC22-105	105	45	22
BT50*FMC22-150	150	45	22
BT50*FMC27-45	45	70	27
BT50*FMC27-80	90	70	27
BT50*FMC27-150	150	70	27
BT50*FMC32-45	45	85	32
BT50*FMC32-75	75	85	32
BT50*FMC32-105	105	85	32



## Tool Holders

### Mill Arbors

#### BT Collets Shell End Mill Arbors



MAS403

20CrMnTi

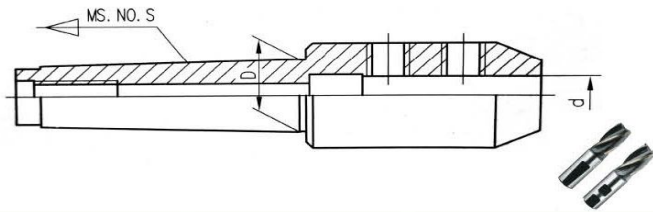
Model	L1	D	D1	d
BT30*CEM16-50	50	32	32.75	16
BT30*CEM22-50	50	40		22
BT30*CEM27-55	55	48		27
BT40*CEM16-55	55	32	44.45	16
BT40*CEM16-100	100	32		16
BT40*CEM22-55	55	40		22
BT40*CEM22-100	100	40		22
BT40*CEM27-55	55	48		27
BT40*CEM27-100	100	48		27
BT40*CEM32-60	60	58		32
BT40*CEM32-100	100	58		32
BT40*CEM40-60	60	70		40
BT40*CEM40-100	100	70		40
BT50*CEM16-70	70	32	69.85	16
BT50*CEM16-100	100	32		16
BT50*CEM22-70	70	40		22
BT50*CEM22-100	100	40		22
BT50*CEM27-70	70	48		27
BT50*CEM27-100	100	48		27
BT50*CEM32-70	70	58		32
BT50CEM32-100	100	58		32
BT50*CEM40-70	70	70		40
BT50*CEM40-100	100	70		40



## Tool Holders

### Mill Arbors

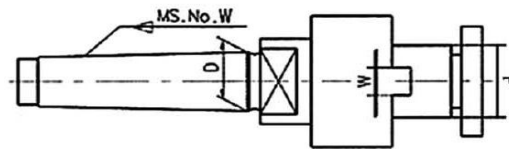
#### MT 侧固式铣刀杆 MT Side Lock End Mill Arbors



DIN228

Model	D	d		
		单头, 双头	单夹头 (in)	双夹头 (in)
MS2-20	17.780	4-20	3/16"-3/4"	3/8"-3/4"
MS3-25	23.825	4-25	3/16"-1"	3/8"-1"
MS4-40	31.267	4-40	3/16"-1-1/2"	3/8"-1-1/2"
MS5-63	44.399	4-63	3/16"-1-1/2"	3/8"-1-1/2"

#### MT 套式立铣刀杆 MT Shell End Mill Arbors



DIN228

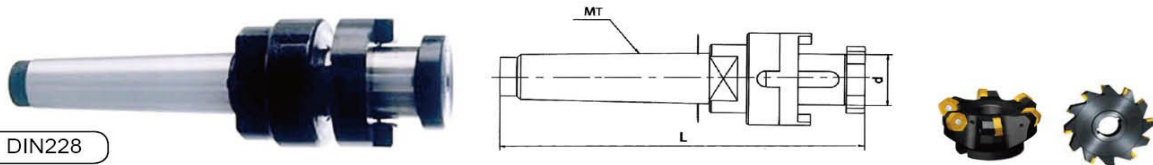
Model	D	d	W
MT2-13	17.78	13	8
MT2-16		16	8
MT2-22		22	10
MT2-27		27	12
MT3-13	23.825	13	8
MT3-16		16	8
MT3-22		22	10
MT3-27		27	12
MT3-32		32	14
MT3-40	31.267	40	16
MT4-13		13	8
MT4-16		16	8
MT4-22		22	10
MT4-27		27	12
MT4-32		32	14
MT4-40		40	16
MT4-50	50	18	



## Tool Holders

### Mill Arbors

#### MT 混合插入式铣刀杆 MT Combine Shell End Mill Arbors

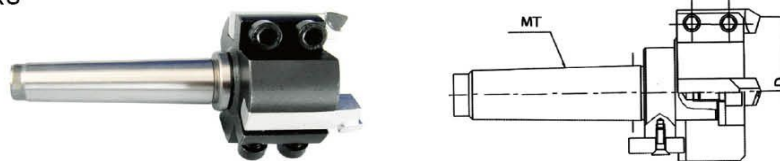


DIN228

Model	MS.NO	d	L	Wt
MT3-13	MT3	13	143	0.446
MT3-16	MT3	16	149	0.49
MT3-22	MT3	22	157	0.605
MT3-27	MT3	27	160	0.725
MT3-32	MT3	32	169	0.975
MT4-13	MT4	13	175	0.842
MT4-16	MT4	16	181	0.884
MT4-22	MT4	22	184	0.969
MT4-27	MT4	27	187	1.083
MT4-32	MT4	32	199	1.395
MT4-40	MT4	40	203	1.746
MT5-22	MT5	22	226	2.137
MT5-27	MT5	27	229	2.294
MT5-32	MT5	32	233	2.496
MT5-40	MT5	40	237	2.862
MT5-50	MT5	50	242	2.536

#### 端面铣刀 Face Milling Cutters

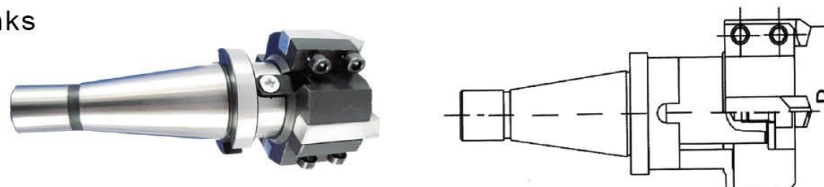
MT Shanks



DIN228

Model	Circle D	Shank Taper	Blades
DX80	Φ80	MT3	4
DX63	Φ63	MT3	4
DX50	Φ50	MT2	3

NT Shanks



DIN2080

Model	Circle D	Shank Taper	Wt
7:24.DX80	Φ80	40-50	2.2
7:24.DX63	Φ63	30-40	2





## Tool Holders

### Boring Heads

#### 镗头与镗头 Boring Heads & Boring Cutters

##### 镗头 Boring Heads



Model	D	H	Max Offset	Boring bar Dia.	Min Graduation	Dia of Boring
F1-1/2"	50	61.6	5/8"	1/2"	0.001"	3/8"-5"
F1-3/4"	75	80.2	1"	3/4"	0.005"	1/2"-9"
F1-1"	100	93.2	1-5/8"	1"		5/8"- 12"
F1-12	50	61.6	16mm	12mm	0.01mm	10-125mm
F1-18	75	80.2	25mm	18mm		12-225mm
F1-25	100	93.2	41mm	25mm		15-320mm

##### 镗刀 Boring Cutters



The Technological Data of F1 Type Boring Heads

Metric			Inch		Qty of Boring Cutters	Bar Thread
Dia. of Boring Holes	Dia. of Boring Heads	Boring Capacity	Dia. of Boring Holes	Dia. of Boring Heads		
F1--12mm	50mm	10-125mm	F1-2"	1/2"	9PCS	7/8-20 ; 1-1/2-18
F1--18mm	75mm	12-225mm	F1- 3"	3/4"	12PCS	1-1/2-18
F1--25mm	100mm	15-320mm	F1- 4"	1"	6PCS	1-1/2-18



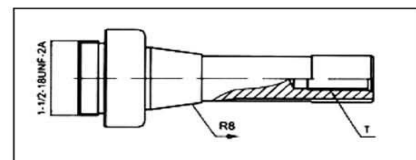
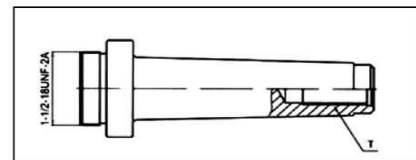
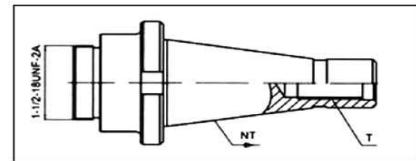
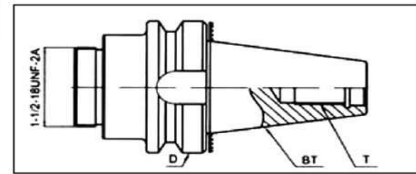
## Tool Holders

### Boring Heads

#### 镗头连接柄 Boring Head Shanks



Model	T	L	Wt.
BT40	M16×2.0P	102	1.24
BT50	M24×3.0P	134	3.97
NT30	1/2×12UNC	102	0.6
NT30	M12×1.75P	102	0.6
NT40	5/8×11UNC	135	1.2
NT40	M16×2.0P	135	1.2
NT50	1"×8UNC	168	3.14
NT50	M24×3.0P	168	3.14
MT2	3/8×16UNC	93	0.4
MT2	M10×1.5P	108	0.4
MT3	3/8×16UNC	110	0.44
MT3	1/2×12UNC	110	0.44
MT3	M12×1.75P	128	0.44
MT4	5/8"×11UNC	133	0.95
MT4	M16×2.0P	154	0.95
MT5	1"×8UNC	160	1.7
MT5	M24×3.0P	185	1.7
R8	7/16×20UNF	132.5	0.6
R8	M12×1.75P	132.5	0.6



\* Please state the detailed size when ordering. e.g. F1-NT40-18mm-12pcs.



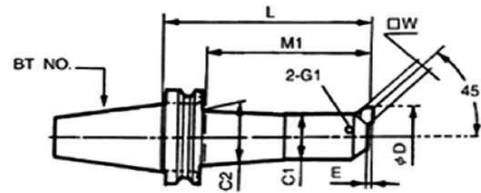


## Tool Holders

### Boring Bar

数控粗镗斜角刀柄

BSA Square Cutter Boring Bar



MAS403

20CrMnTi

45°

Specially for blind-hole

Model	D		C1	C2	M1	H1	W	T	N.W.
	Max	Min							
BT30×BSA20-105	30	20	17	19	81	30	6	M6	0.8
BT30×BSA25-120	38	25	20	24	96	35	8	M6	0.9
BT30×BSA30-150	42	30	24	28	126	40	8	M6	1.0
BT30×BSA38-165	52	38	30	36	141	50	10	M8	1.2
BT30×BSA50-165	65	50	40	48	141	65	13	M8	1.3
BT40×BSA25-120	38	25	20	22	90	35	8	M6	1.2
BT40×BSA30-150	42	30	24	26	120	40	8	M6	1.4
BT40×BSA38-165	52	38	30	33	135	50	10	M8	1.7
BT40×BSA42-165	56	42	34	37	135	50	10	M8	2.0
BT40×BSA50-165	65	50	40	44	135	65	13	M8	2.3
BT40×BSA62-180	90	62	50	56	150	80	16	M10	2.4
BT40×BSA72-180	110	72	60	-	150	95	19	M10	3.9
BT40×BSA90-180	125	90	75	-	150	110	19	M10	5.2
BT50×BSA25-135	38	25	20	22	92	35	8	M6	4.2
BT50×BSA30-165	42	30	24	26	122	40	8	M6	4.4
BT50×BSA38-180	52	38	30	33	137	50	10	M8	4.8
BT50×BSA42-210	56	42	34	37	167	60	10	M8	5.0
BT50×BSA50-180	65	50	40	44	137	65	13	M10	5.4
BT50×BSA62-195	90	62	50	56	152	80	16	M10	6.2
BT50×BSA72-195	110	72	60	66	152	95	19	M10	7.0
BT50×BSA90-210	125	90	75	80	167	110	19	M12	9.2
BT50×BSA105-195	160	105	90	-	-	-	25	M12	10.7
BT50×BSA130-255	190	130	110	-	-	120	25	M12	14.5

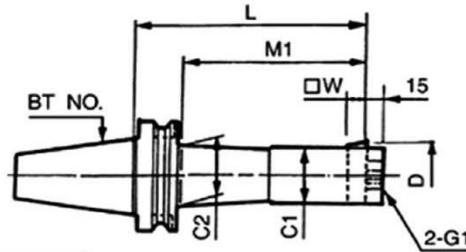


## Tool Holders

### Boring Bar

数控粗镗直角刀柄

BSB Square Cutter Boring Bar



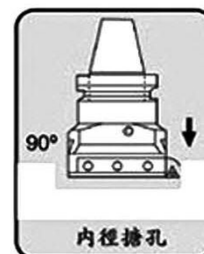
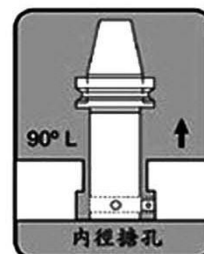
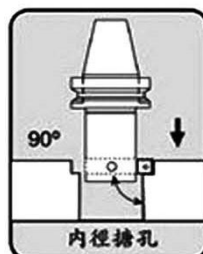
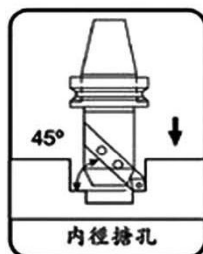
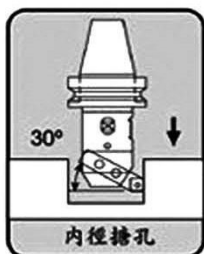
MAS403

20CrMnTi

90°

Specially for through-hole

Model	D		C1	C2	M1	H1	W	T	N.W.
	Max	Min							
BT30×BSB25-120	38	25	20	24	96	35	8	M6	0.9
BT30×BSB30-150	42	30	24	28	125	40	8	M6	1.0
BT30×BSB38-165	52	38	30	36	141	45	10	M8	1.1
BT30×BSB50-165	65	50	40	48	141	50	13	M8	1.2
BT40×BSB25-120	52	25	20	22	90	35	8	M6	1.2
BT40×BSB38-150	70	38	30	33	120	55	10	M8	1.7
BT40×BSB50-165	90	50	40	44	135	70	13	M10	2.5
BT40×BSB62-180	115	62	50	56	150	80	16	M10	3.6
BT40×BSB90-180	150	90	75	-	150	115	19	M12	5.9
BT50×BSB25-135	52	25	20	22	92	35	8	M6	4.3
BT50×BSB38-180	70	38	30	32	137	55	10	M8	4.9
BT50×BSB50-180	90	50	40	44	137	70	13	M10	5.5
BT50×BSB62-195	115	62	50	56	152	80	16	M10	6.4
BT50×BSB72-195	135	72	60	66	152	95	19	M12	7.3
BT50×BSB90-210	150	90	75	80	167	115	19	M12	9.7
BT50×BSB105-195	190	105	90	90	-	-	25	M12	11.4
BT50×BSB130-255	260	130	110	-	-	60	25	M12	14.1

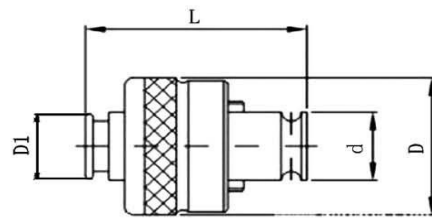




## Tool Holders

### Tapping Collets

#### 丝锥夹套 Tapping Collets



Model	Capacity	d	D	D1	L	W	
GT12	-3	M3	19	38	3.15	54	2.5
	-4	M4			4		3
	-5	M5			5		4
	-6	M6			6.3		5
	-8	M8			6.3		5
	-10	M10			8		6.3
GT24	-12	M12	30	58	9	79.5	7.1
	-14	M14			11.2		9
	-16	M16			12.5		10
	-18	M18			14		11.2
	-20	M20			14		11.2
	-22	M22			16		12.5
GT42	-24	M24	45	85	18	117	14.05
	-27	M27			20		16.05
	-30	M30			20		16.05
	-33	M33			22.4		18.05
	-36	M36			25		20.05
	-39	M39			28		22.45
	-42	M42			28		22.45





## Tool Holders

### Tapping Collets Chuck Set

#### 攻丝夹头 Tapping Collets Chuck Set



Model	Sizes of Collets
MT3 / 4 / 5 -- GT12 / 7PCS	GT12-M3,M4,M5,M6,M8,M10,M12
MT3 / 4 / 5 -- GT24 / 7PCS	GT24-M12,M14,M16,M18,M20,M22,M24
MT 4 / 5 -- GT42 / 7PCS	GT42-M24,M27,M30,M33,M36,M39,M42
NT30 / 40 / 50 -- GT12 / 7PCS	GT12-M3,M4,M5,M6,M8,M10,M12
NT30 / 40 / 50 -- GT24 / 7PCS	GT24-M12,M14,M16,M18,M20,M22,M24
NT40 / 50 -- GT42 / 7PCS	GT42-M24,M27,M30,M33,M36,M39,M42
BT30 / 40 / 50 -- GT12 / 7PCS	GT12-M3,M4,M5,M6,M8,M10,M12
BT30 / 40 / 50 -- GT24 / 7PCS	GT24-M12,M14,M16,M18,M20,M22,M24
BT40 / 50 -- GT42 / 7PCS	GT42-M24,M27,M30,M33,M36,M39,M42
CAT30 / 40 / 50 -- GT12 / 7PCS	GT12-M3,M4,M5,M6,M8,M10,M12
CAT30 / 40 / 50 -- GT24 / 7PCS	GT24-M12,M14,M16,M18,M20,M22,M24
CAT40 / 50 -- GT42 / 7PCS	GT42-M24,M27,M30,M33,M36,M39,M42

\* Please state the detailed size when ordering; e.g.NT40-GT24/7PCS.

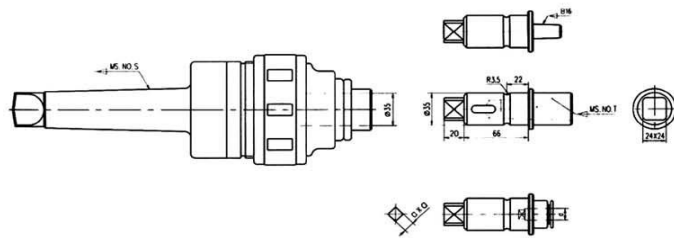




## Tool Holders

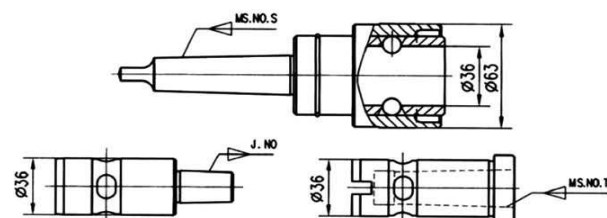
## Tool Holders

### 钻攻多用夹头 Drilling & Tapping Chuck Set



Morse Taper	Drill Chuck Adaptor	Tapping Range	Morse Adaptor
MT3	B16	MT6-MT30	MS1,2,3
MT4			
MT5			

### 391型快换夹头 391 Quick Change Chuck



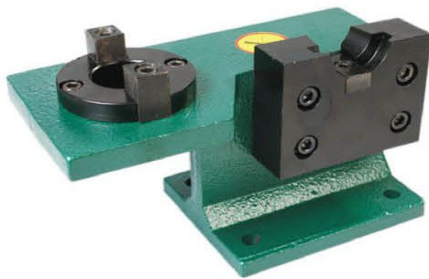
MS.NO.S	MS.NO.T	J.NO
MT3	MT1 MT2 MT3	J0, J1, J2, J2S, J3, J4, J5, J6, J33.
MT4	MT1 MT2 MT3	
MT5	MT1 MT2 MT3	



## Tool Holders

### Tool Locking Devices

#### 锁刀座 Tool Locking Devices

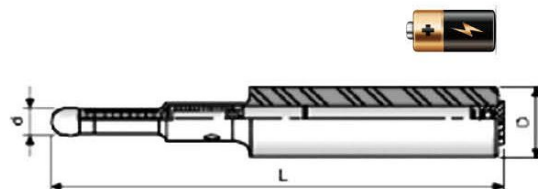
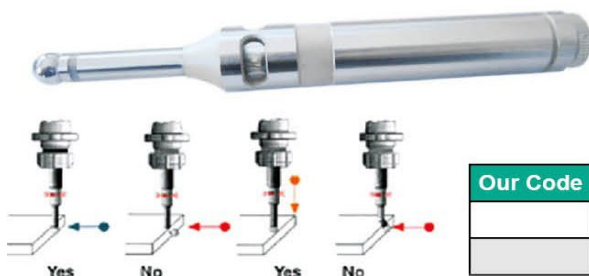


Aluminum

Model	Taper of Tool Holder	Outer Size	Wt.
LD-BT30	BT30	205*98.5*128	3.7
LD-BT40	BT40	205*98.5*128	3.8
LD-BT50	BT50	275*150*198	11.4
LD-DAT30	DIN69871.30	205*98.8*128	3.7
LD-DAT40	DIN69871.40	205*98.8*128	3.8
LD-DAT50	DIN69871.50	275*150*198	11.4
LD-CAT30	CAT30	205*98.8*128	3.7
LD-CAT40	CAT40	205*98.8*128	3.8
LD-CAT50	CAT50	275*150*198	11.4

#### 寻边器 (带声光) Edge Finder

Touch point LED indication  
 Manufactured from high quality alloy steel  
 Hardened and precision ground  
 Concentricity 0.01mm



Our Code	Model	D(mm)	L(mm)	d(mm)
	ES-20	20	160	10
	ES-32	32	160	10

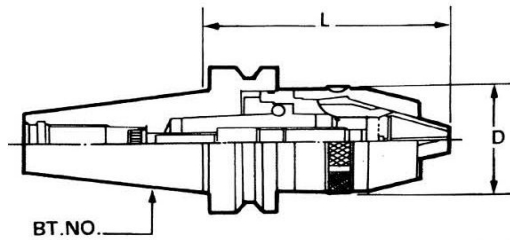




## Tool Holders

### Integrated Drill Chucks

#### BT30/BT40/BT50



MAS403

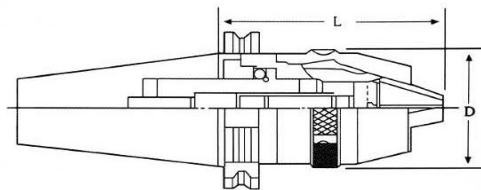
≤0.10

Tool steel



Model	Clamping range	D	L	
			Min	Max
BT30-APU08-80	1-8	36.3	75	82
BT30-APU13-100	1-13	51.5	94	104.5
BT40-APU08-85	1-8	36.3	79	86.5
BT40-APU13-110	1-13	51.5	98	109
BT40-APU16-130	3-16	58	115	130
BT50-APU08-95	1-8	36.3	90	97.5
BT50-APU13-120	1-13	51.5	109	120
BT50-APU16-190	3-16	58	176	190

#### DAT40/DAT50



DIN69871A

≤0.10

Tool steel



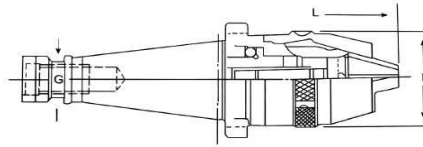
Model	Clamping range	D	L	
			Min	Max
DAT40-APU08-75	1-8	36.3	69	76.5
DAT40-APU13-100	1-13	51.5	88	90
DAT40-APU16-120	3-16	58	106	120
DAT50-APU08-95	1-8	36.3	80	87.5
DAT50-APU13-110	1-13	51.5	99	110
DAT50-APU16-120	3-16	58	106	120



## Tool Holders

### Integrated Drill Chucks

NT30/NT40/NT50



DIN2080

≤0.15

Tool steel



Model	Clamping range	D	L		Back Bar Thread
			Min	Max	
NT30-APU08-80	1-8	36.3	75	82	M12×1.75P
NT30-APU13-100	1-13	51.5	94	104.5	
NT40-APU08-85	1-8	36.3	79	86.5	
NT40-APU13-110	1-13	51.5	98	109	M16×2.0P
NT40-APU16-130	3-16	58	115	130	
NT50-APU13-120	1-13	51.5	109	120	
NT50-APU16-130	3-16	58	116	130	

莫氏柄整体式夹头

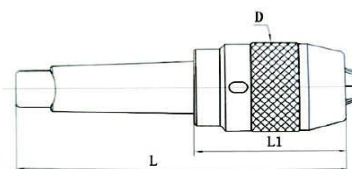
Integrated Chuck with Morse Taper Shank

R8柄整体式夹头

Integrated Chuck with R8 Shank

直柄整体式夹头

Integrated Chuck with Straight Shank



Tool steel

≤0.15

Model	Capacity	L	L1	D
MT3-13	1- 13	182.5	83.5	45
MT3-16	1- 16	184	85	54
MT4-13	1- 13	207.5	83.5	54
MT4-16	1- 16	209	85	54
C20-13	1- 13	143.5	83.5	54
C20-16	1- 16	145	85	54
C25-13	1- 13	163.5	83.5	54
C25-16	1- 16	165	85	54
C32-13	1- 13	163.5	83.5	54
C32-16	1- 16	165	85	54
R8-13	1- 13	187.5	83.5	54
R8-16	1- 16	189	85	54

**Features:**

1. The design of drill chuck makes it more suitable for milling machine and integrated cutting machine.
2. Exact machinery and firmly components ensure the accuracy and endurance.



## Tool Holders

# Automatic Drill Chucks

### 自紧式钻夹头 Automatic Drill Chucks



锥孔连接自紧式钻夹头 Taper-fitting Automatic Drill Chucks

Model	Capacity	Taper	d	h	D	L	I
J0106	0.5-6	B10	10.094	14.5	35	67	61
J0206	1/64"-1/4"	JT1	9.754	16.669	35	67	61
J0110	1-10	B12	12.065	18.5	42	86	78
J0210	1/32"-3/8"	JT2	14.199	22.225	42	86	78
J0113	1-13	B16	15.733	24	44	97	88
J0213	1/32"-1/2"	JT33	15.85	25.4	44	97	88
J0116A	3-16	B16	15.733	24	48	102	92
J0216	1/8"-5/8"	JT6	17.170	25.4	48	102	92
J0116	3-16	B18	17.78	32	48	108	98
J0216	1/8"-5/8"	JT3	20.599	30.956	48	108	98
J0120	5-20	B22	21.3	30.5	53	115	103
J0220	3/16"-3/4"	JT3	20.599	30.956	53	115	103

螺纹孔连接自紧式钻夹头 Thread mounted Automatic Drill Chucks

Model	Capacity	Thread	h	D	L	I
J0306	1/64"-1/4"	3/8"-24UNF	14	35	67	61
J0308	1/64"-5/16"	3/8"-24UNF	14	42	86	78
J0310A	1/32"-3/8"	3/8"-24UNF	14	42	86	78
J0310B	1/32"-3/8"	1/2"-24UNF	16	42	86	78
J0313A	1/32"-1/2"	1/2"-24UNF	16	44	90	81
J0313B	1/32"-1/2"	3/8"-24UNF	14	44	90	81
J0316A	1/8"-5/8"	1/2"-24UNF	16	48	102	92
J0316C	1/8"-5/8"	5/8"-16UN	18	48	102	92

\* Please state light or heavy duty as you prefer when ordering.

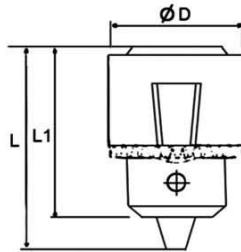


## Tool Holders

### Stainless Steel Drill Chucks

不锈钢钻夹头

Stainless Steel Drill Chucks



≤0.10

Stainless Steel

Carbon Steel 4mm JT0

Model	Capacity	Connecting Hole	D	L	L1
J204	0.3-4	JT0	20	36	30
J206	0.6-6	JT1 ,B10	28	47	38
J208	0.6-8	B10 ,3/8-24	30	50	42
J2010	1.0-10	JT2 ,B12 ,3/8-24UNF	34	60	50
J2013	1.0-13	JT6 ,JT33 ,B16 ,1/2-20UNF	42	70	56

#### Features:

- 1.High precision threaded and tapered tightly mounts on the tools.
- 2.Jaw are specifically engineered for tight tolerance production drilling.
- 3.Suitable for super electrical grinder, engraving machines, precision machine lathe & medical equipment .



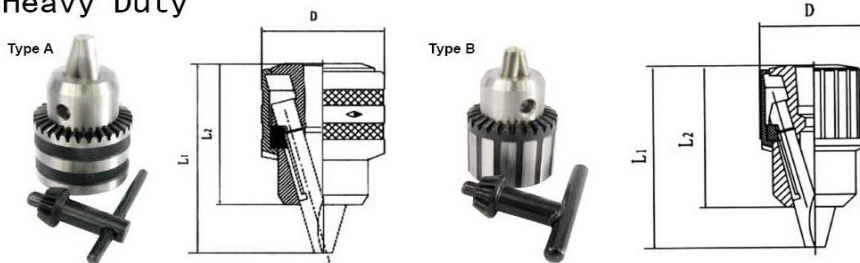


## Tool Holders

### Drill Chucks

#### 扳手型锥孔钻夹头 Key-type Drill Chucks with taper fitting

重型 Heavy Duty

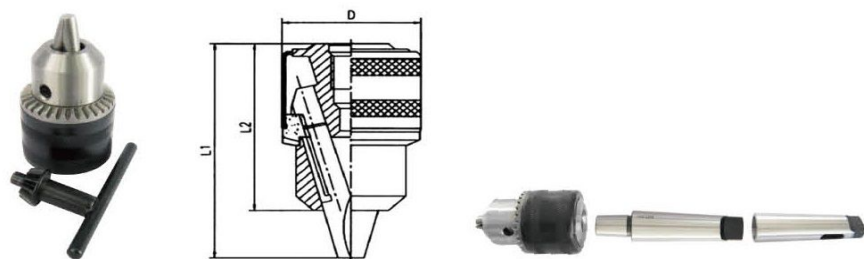


≤0.20

C45

Model	Capacity	Mounts	D	L1	L2
J216	0.6-6	B10	30.3	50	39.5
J2110	1-10	B12	43.4	69.7	54
J2113	1-13	B16	53.2	86	67
J2116A	1-16	B16	57	93	75
J2116	3-16	B18	57	93	75
J2120	5-20	B22	65.3	110	82
J226	1/4"	JT1	30.3	50	39.5
J2210	3/8"	JT2	43.4	69.7	54
J2213A	1/2"	JT6	53.2	86	67
J2213	1/2"	JT33	53.2	86	67
J2216	5/8"	JT3	57	93	75
J2220	3/4"	JT3	68	120	92

轻型 Light Duty



≤0.30

C45

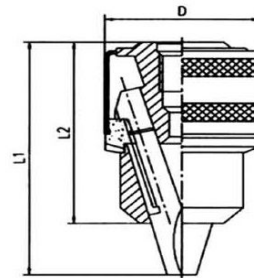
Model	Capacity	Mounts	D	L1	L2
J2510	1.5-10	B12	34	58.5	49
J2610	3/8"	JT2	34	58.5	49
J2513	1.5-13	B16	43.5	74	60
J2613	1/2"	JT6	43.5	76	60
J2516	3-16	B18	52	86	67
J2516A	3-16	B16	52	86	67
J2616	5/8"	JT3	53.2	97	78



## Tool Holders

### Drill Chucks

#### 扳手型螺纹孔钻夹头 Key-type Drill Chucks with Thread mounted

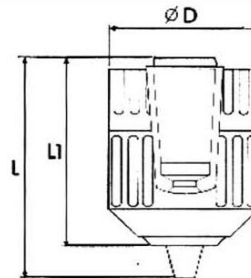


≤0.30

C45

Model	Capacity	Mounts	D	L1	L2
J3506B	0.6-6	3/8-24UNF	30.3	49	40
J3510C	1-10	3/8-24UNF	34	58.5	49
J3510G	1-10	1/2-20UNF	34	58.5	49
J3510D	1-10	M10×1	34	58.5	49
J3513A	1.5-13	1/2-20UNF	42	71.5	59
J3513B	1.5-13	3/8-24UNF	42	71.5	59
J3513D	1.5-13	M12×1.25	42	71.5	59
J3516A	3-16	1/2-20UNF	52	86	67
J3516C	3-16	5/8-16UN	52	86	67

#### 手紧式钻夹头 Keyless Hand-tightening Drill Chucks



≤0.30

PA6-30G

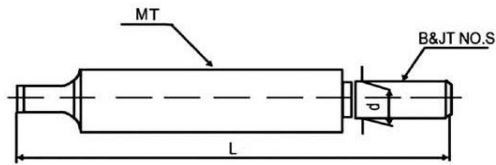
Model	Capacity	Mounts	D	L1	L
J1510A	0.8 -10	3/8-24UNF	41	54.5	64
J1510B	0.8 -10	1/2-20UNF	41	54.5	64
J1513A	2 -13	1/2-20UNF	43	62	74.5
J1513B	2 -13	3/8-24UNF	43	62	74.5



## Tool Holders

### Drill Chuck Arbor

#### 扁尾式接杆 Drill Chuck Arbor with Draw Bar

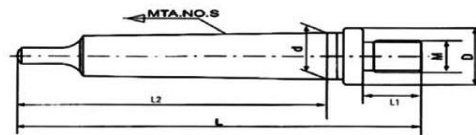


DIN238A C45 ≥85%

Model	L	d
B10-MT2	101	10.094
B10-MT3	120	10.094
B10-MT4	145	10.094
B12-MT2	105	12.065
B12-MT3	124	12.065
B12-MT4	149	12.065
B16-MT2	112	15.733
B16-MT3	131	15.733
B16-MT4	156	15.733
B16-MT5	188	15.733
B18-MT2	120	17.78
B18-MT3	139	17.78
B18-MT4	164	17.788
B18-MT5	196	17.78
B22-MT3	147	21.793
B22-MT4	172	21.793

Model	L	d
B22-MT5	204	21.793
B24-MT5	214	23.825
JT1-MT2	100	9.754
JT1-MT3	118	9.754
JT2-MT3	90	14.199
JT2-MT4	105	14.199
JT2-MT5	149	14.199
JT33-MT2	108	15.85
JT33-MT3	127	15.85
JT33-MT4	152	17.17
JT33-MT5	184	15.85
JT3-MT3	133	20.599
JT3-MT4	158	20.599
JT3-MT5	190	20.599
JT4-MT4	169	28.55
JT4-MT5	201	28.55

#### 扁尾式螺纹钻接杆 Drill Chuck Arbor with Thread



DIN238 C45 ≥85%

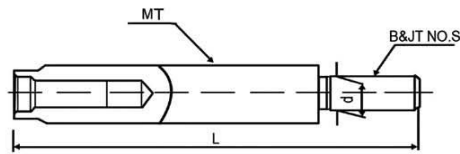
Model	L	L1	L2	D	d
MT2-3/8"-24UNF	97	13.5	75	24	17.780
MT2-1/2"-20UNF	100	15.5	75	27	17.780
MT3-3/8"-24UNF	116	13.5	94	24	23.825
MT3-1/2"-20UNF	119	15.5	94	27	23.825



## Tool Holders

### Drill Chuck Arbor

#### 后拉式接杆 Drill Chuck Arbor with Tang Form



DIN228

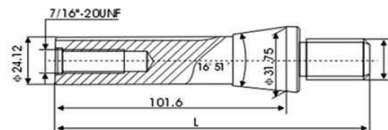
C45

≥85%

Model	L	d
B12-MT2	94	12.065
B12-MT3	111	12.065
B16-MT2	101	15.733
B16-MT3	118	15.733
B16-MT4	141	15.733
B16-MT5	168	15.733
B18-MT2	109	17.78
B18-MT3	126	17.78
B18-MT4	149	17.780
B18-MT5	176	17.78
B22-MT2	117	21.793
B22-MT3	135	21.793
B22-MT4	158	21.793
B22-MT5	185	21.793
JT1-MT2	88	9.754
JT1-MT3	105	9.754
JT2-MT2	94	14.199
JT2-MT3	111	14.199

Model	L	d
JT2-MT4	134	14.199
JT2-MT5	161	14.199
JT33-MT2	97	15.85
JT33-MT3	114	15.85
JT33-MT4	137	15.850
JT33-MT5	164	15.85
JT3-MT2	103	20.599
JT3-MT3	120	20.599
JT3-MT4	143	20.599
JT3-MT5	170	20.599
JT4-MT2	114	28.55
JT4-MT3	131	28.55
JT4-MT4	154	28.55
JT4-MT5	181	28.55
JT5-MT5	136	35.89
JT5-MT4	159	35.89
JT5-MT5	186	35.89
JT5-MT6	240	35.89

#### R8钻接杆 R8 Drill Chuck Arbors



C45

≥85%

Model	D	L
R8-JT2S	125	13.94
R8-JT2	128	14.199
R8-JT33	132	15.85
R8-JT6	132	17.17
R8-JT3	137	20.599
R8-JT4	148	28.55

Model	D	L
R8-B6	118.5	6.35
R8-B10	124	10.094
R8-B12	128	12.065
R8-B16	135	15.733
R8-B18	143	17.78
R8-B22	152	21.793



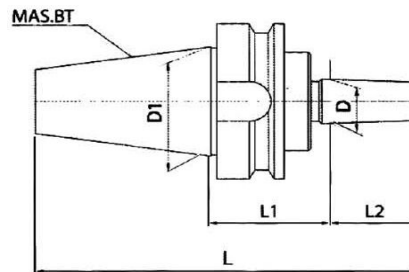


## Tool Holders

### CNC Drill Chuck Arbor

BT 钻夹头接杆

BT Drill Chuck Arbors



MAS 403

C45

≥85%

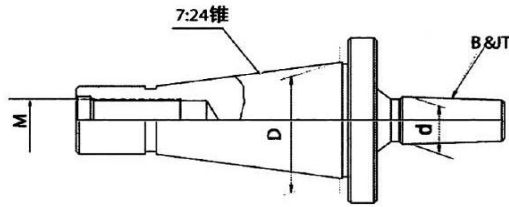
Model	L2	L	D	D1	M
BT30-JT2-45	22.225	115.6	14.199	31.75	M12
BT30-JT3-45	30.956	124.4	20.599	31.75	M12
BT30-JT33-40	25.4	113.8	15.850	31.75	M12
BT30-JT33-45	25.4	118.8	15.850	31.75	M12
BT30-B10-45	14.5	107.9	10.094	31.75	M12
BT30-B12-45	18.5	111.9	12.065	31.75	M12
BT30-B16-45	24	117.4	15.733	31.75	M12
BT30-B18-45	32	125.4	17.780	31.75	M12
BT40-JT2-45	22.225	132.6	14.199	44.45	M16
BT40-JT3-45	30.956	141.4	20.599	44.45	M16
BT40-J33-45	25.4	135.8	15.850	44.45	M16
BT40-B10-45	14.5	124.9	10.094	44.45	M16
BT40-B10-120	14.5	199.9	10.094	44.45	M16
BT40-B12-45	18.5	128.9	12.065	44.45	M16
BT40-B16-32	24	121.4	15.733	44.45	M16
BT40-B16-45	24	134.4	15.733	44.45	M16
BT40-B16-75	24	164.4	15.733	44.45	M16
BT40-B16-90	24	179.4	15.733	44.45	M16
BT40-B18-45	32	142.4	15.733	44.45	M16
BT40-B18-75	32	172.4	17.780	44.45	M16
BT45-B16-90	24	196.8	17.780	44.45	M16
BT45-B16-100	24	206.8	15.733	51.75	M16
BT50-JT3-45	30.596	177.8	20.599	69.85	M24
BT50-JT4-45	42.069	188.9	28.550	69.85	M24
BT50-JT33-45	25.4	172.2	15.850	69.85	M24
BT50-B16-45	24	170.8	15.733	69.85	M24
BT50-B16-60	24	185.8	15.733	69.85	M24
BT50-B16-75	24	200.8	15.733	69.85	M24
BT50-B16-90	24	215.8	15.733	69.85	M24
BT50-B18-45	32	178.8	17.780	69.85	M24



## Tool Holders

### Drill Chuck Arbor

#### NT 钻夹头接杆 NT Drill Chuck Arbors



DIN2080

C45

≥85%

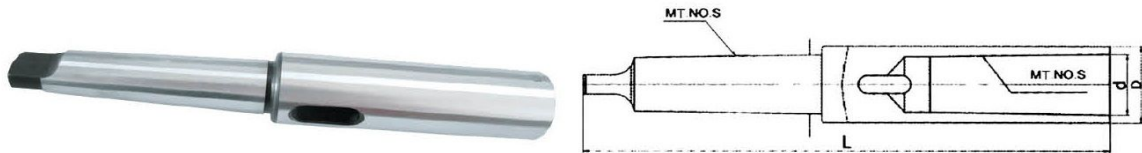
Model	D	d	L	M	Wt.
NT30-JT2	31.75	14.199	113	M12	0.349
NT30-JT33	31.75	15.85	122	M12	0.377
NT30-JT6	31.75	17.17	122	M12	0.388
NT30-JT3	31.75	20.599	123	M12	0.426
NT30-JT4	31.75	28.55	136	M12	0.602
NT30-JT5	31.75	35.89	145	M12	0.827
NT40-JT2	44.45	14.199	141	M16	0.829
NT40-JT33	44.45	15.85	145	M16	0.853
NT40-JT6	44.45	17.17	145	M16	0.864
NT40-JT3	44.45	20.599	150	M16	0.902
NT40-JT4	44.45	28.55	165	M16	1.028
NT40-JT5	69.85	35.89	170	M24	1.303
NT50-JT2	69.85	14.199	180	M24	2.74
NT50-JT6	69.85	17.17	184	M24	2.739
NT30-B10	31.75	10.094	104	M12	0.325
NT30-B12	31.75	12.065	108	M12	0.33
NT30-B16	31.75	15.733	116	M12	0.372
NT30-B18	31.75	17.78	124	M12	0.393
NT30-B22	31.75	21.793	133	M12	0.460
NT40-B12	44.45	12.065	136	M16	0.809
NT40-B16	44.45	15.733	143	M16	0.848
NT40-B18	44.45	17.78	151	M16	0.869
NT40-B22	44.45	21.793	160	M16	0.936
NT40-B24	44.45	23.825	169	M16	0.994
NT50-B10	69.85	10.094	170	M24	2.676
NT50-B18	69.85	17.78	95	M24	2.744
NT50-B22	69.85	21.793	200	M24	2.811
NT50-B24	69.85	23.825	215	M24	2.869



## Tool Holders

### Drill Sleeves

#### 加长变径套 Extension Drill Sleeves



DIN2187 C45 ≥85%



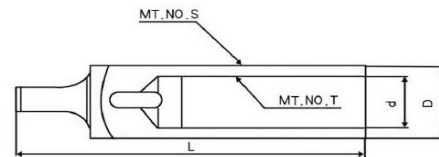
Model	MT. No. S	MT. No. T	D	d	L	Wt.
MT1×1	1	1	20	12.065	145	0.19
MT1×2	1	2	30	17.780	160	0.40
MT1×3	1	3	36	23.825	181	0.40
MT2×1	2	1	20	12.065	160	0.29
MT2×2	2	2	30	17.780	175	0.50
MT2×3	2	3	36	23.825	196	0.60
MT2×4	2	4	48	31.267	221	1.43
MT3×1	3	1	20	12.065	175	0.41
MT3×2	3	2	30	17.780	194	0.62
MT3×3	3	3	36	23.825	215	0.89
MT3×4	3	4	48	31.267	240	1.55
MT3×5	3	5	63	44.399	275	2.80
MT4×1	4	1	20	12.065	200	0.81
MT4×2	4	2	30	17.780	215	1.00
MT4×3	4	3	36	23.825	240	1.27
MT4×4	4	4	48	31.267	265	1.93
MT4×5	4	5	63	44.399	300	3.18
MT4×6	4	6	85	63.348	368	6.50
MT5×2	5	2	30	17.780	247	2.00
MT5×3	5	3	36	23.825	268	2.27
MT5×4	5	4	48	31.267	300	2.93
MT5×5	5	5	63	44.399	335	4.18
MT5×6	5	6	85	63.348	403	6.70
MT6×2	6	2	30	17.780	309	4.25
MT6×3	6	3	36	23.825	330	4.52
MT6×4	6	4	48	31.267	355	5.18
MT6×5	6	5	63	44.399	390	6.43



## Tool Holders

### Drill Sleeves

#### MT 变径套 MT Drill Sleeves



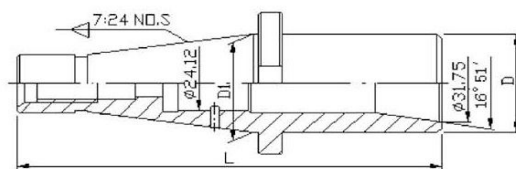
DIN2185

C45

≥85%

Model	MT. No. S	MT. No. T	D	d	L	Wt.
MT2×1	2	1	18.6	12.065	90	0.10
MT3×1	3	1	24.1	12.065	99	0.24
MT3×2	3	2	24.7	17.78	108	0.12
MT4×1	4	1	31.6	12.065	124	0.60
MT4×2	4	2	31.6	17.780	124	0.50
MT4×3	4	3	32.4	23.825	132	0.38
MT5×2	5	2	44.7	17.780	156	1.49
MT5×3	5	3	44.7	23.825	156	1.36
MT5×4	5	4	45.5	31.267	164	0.95
MT6×3	6	3	63.8	23.825	218	3.85
MT6×4	6	4	63.8	31.267	218	3.12
MT6×5	6	5	63.8	44.399	218	1.95

#### NT/MT 变径套 NT/MT Adapt Sleeves



DIN2080

C45

≥85%

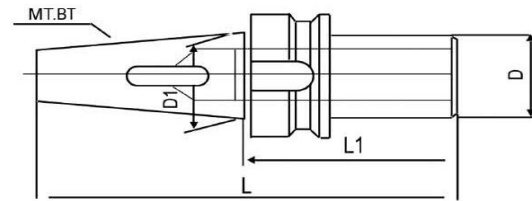
Model	7:24.NO.S	D	d	D1	L
NT30-MT2	NT30	32	17.780	31.75	118
NT30-MT3	NT 30	40	23.825	31.75	138
NT30-MT4	NT 30	48	31.267	31.75	212
NT40-MT2	NT 40	32	17.780	44.45	143
NT40-MT3	NT 40	40	23.825	44.45	158
NT40-MT4	NT 40	48	31.267	44.45	186
NT40-MT5	NT 40	61	44.399	44.45	273
NT50-MT3	NT 50	40	23.825	69.85	192
NT50-MT4	NT 50	48	31.267	69.85	197
NT50-MT5	NT 50	61	44.399	69.85	232



## Tool Holders

### BT/MT Adapt Sleeves

#### BT/MT 变径套 BT/MT Adapt Sleeves



MAS 403

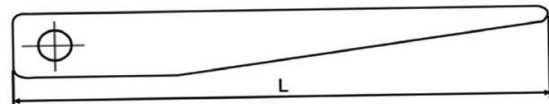
C45

≥85%

Model	L	D	D1
BT30-MT2-60	108.4	32	31.75
BT30-MT3-80	128.4	40	31.75
BT40-MT2-50	115.4	32	44.45
BT40-MT2-60	125.4	32	44.45
BT40-MT2-120	185.4	32	44.45
BT40-MT3-70	135.4	40	44.45
BT40-MT3-75	140.4	40	44.45
BT40-MT4-90	155.4	48	44.45
BT40-MT4-95	160.4	48	44.45
BT40-MT4-135	200.4	48	44.45
BT40-MT4-165	230.4	48	44.45

Model	L	D	D1
BT45-MT4-98	180.8	48	57.15
BT50-MT1-45	146.8	25	69.85
BT50-MT2-135	236.8	32	69.85
BT50-MT3-65	166.8	40	69.85
BT50-MT3-75	176.8	40	69.85
BT50-MT3-120	221.8	40	69.85
BT50-MT3-135	236.8	40	69.85
BT50-MT3-150	251.8	40	69.85
BT50-MT4-85	186.8	48	69.85
BT50-MT4-95	196.8	48	69.85
BT50-MT4-180	281.8	48	69.85

#### 拆卸铁 Drill Drifts



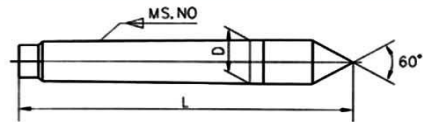
Model	MT. NO	L
NO. 0	0	90
NO. 1-2	1-2	140
NO. 3	3	190
NO. 4	4	225
NO. 5-6	5-6	265



## Tool Holders

### Dead Centers

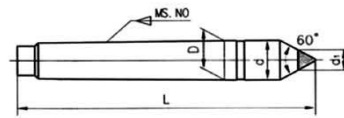
#### 固定顶尖 Dead Center



Model	D	L	d1
MT2	17.780	100	8
MT3	23.825	125	12
MT4	31.267	160	15

Model	D	L	d1
MT5	44.399	200	18
MT6	63.348	280	24
MT7	83.061	360	24

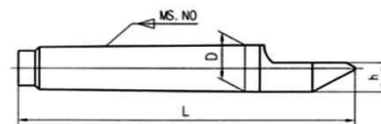
#### 硬质合金固定顶尖 Carbide Dead Center



Model	D	L	d1
MT2	17.780	100	8
MT3	23.825	125	12
MT4	31.267	160	15

Model	D	L	d1
MT5	44.399	200	18
MT6	63.348	280	24
MT7	83.061	360	24

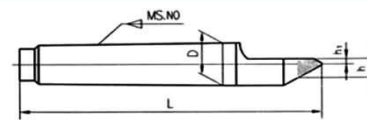
#### 半缺固定顶尖 Half-notched Dead Center



Model	D	L
MT2	17.780	100
MT3	23.825	125
MT4	31.267	160

Model	D	L
MT5	44.399	200
MT6	63.348	280
MT7	83.061	360

#### 半缺硬质合金固定顶尖 Half-notched Carbide Dead Center



Model	D	L
MT2	17.780	100
MT3	23.825	125
MT4	31.267	160

Model	D	L
MT5	44.399	200
MT5	63.348	280
MT7	83.061	360



## Tool Holders

### CNC Live Centers

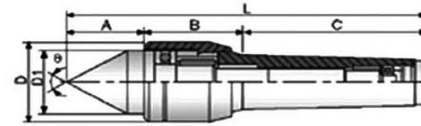
#### 新款数控回转顶尖 New Type Live Center for CNC



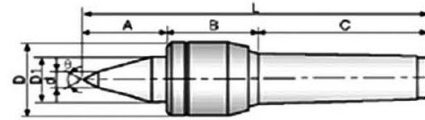
Type A



Type B



Type A



Type B

Model	A	B	C	D	D1	d	L	Max Speed
MT2A	28	35	69	32	32	-	132	5000
MT3A	36	44	86	41	41	-	166	3500
MT4A	41	51	108	47	47	-	200	3000
MT5A	54	72	136	65	65	-	262	2000
MT3B	46	44	86	41	41	10	176	3500
MT4B	55	51	108	47	47	12	2214	3000

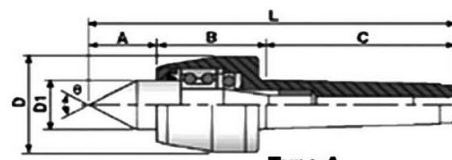
#### 高速回转顶尖 High Speed Live Center for CNC



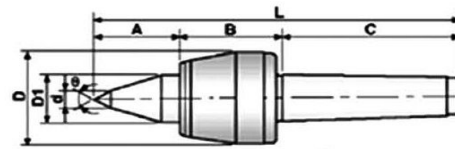
Type A



Type B



Type A



Type B

Model	A	B	C	D	D1	L	Max Speed
MT3A	39	55	86	53	30	180	5000
MT4A	42	62	108	63	32	208	4500
MT5A	49	71	136	83	40	256	3500
MT3B	45	55	86	53	30	186	5000
MT4B	52	62	108	63	32	218	4500
MT5B	59	71	136	83	40	266	3500

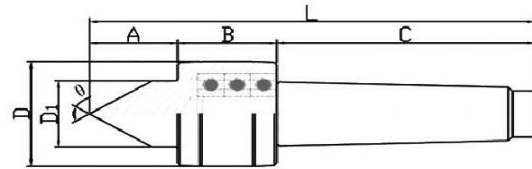
\* With bearings of SKF brand from Sweden.



## Tool Holders

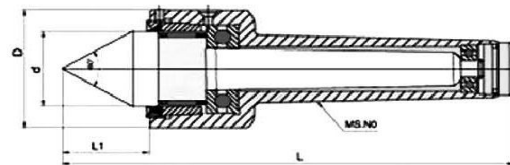
### Live Centers

#### 外旋回转顶尖 Side Live Center



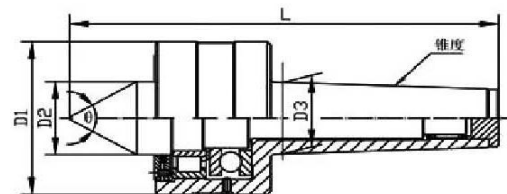
Model	A	B	C	D	D1	L	Max Speed
MT3	39	55	86	53	45	180	4500
MT4	42	62	108	63	53	208	3500
MT5	49	71	136	83	68	256	3000

#### 重型回转顶尖 Heavy Duty Live Center



Model	D	d	L	L1	Max load	Max Speed
MT3	47	30	162	32	400	5000
MT4	55	35	194	37.5	1300	3500
MT5	70	45	240	47	2000	3500
MT6	90	60	318	62	4000	1600

#### H型回转顶尖 Type H Live Center



Model	D1	D2	Max Speed	Wt
MT-2	39	21.7	2800 Rpm	0.55
MT-3	46.5	24.7	2000 Rpm	0.90
MT-4	53.5	27.7	1500 Rpm	1.55
MT-5	63	34.7	1000 Rpm	2.65

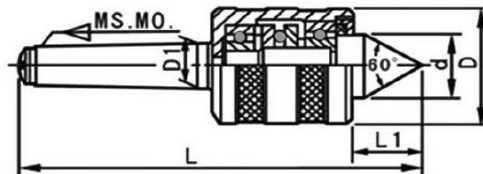




## Tool Holders

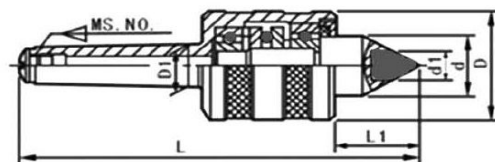
### Live Centers

#### 中型回转顶尖 Medium Duty Live Center



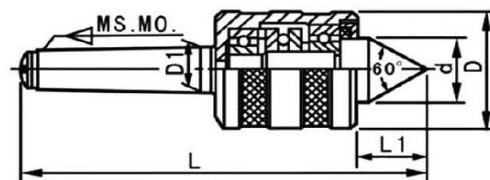
Model	MS.NO	L	D	D1	Wt .
MT2	2	130.5	33	17.780	0.702
MT3	3	170	52	23.825	0.933
MT4	4	210	58	31.267	1.705
MT5	5	268	77	44.399	3.392
MT6	6	362	98	63.348	12

#### 镶合金回转顶尖 Carbide Tipped Live Center



Model	L	L1	d	D	D1	d1	Max speed
MT2	145	26	45	25	17.780	12	5000
MT3	170	30	52	28	23.825	15	4200
MT4	205.7	34.7	60	32	31.267	18	3200
MT5	254	45	77	45	44.399	24	2000
MT6	362	68.5	125	75	63.348	40	1600

#### 密封回转顶尖 Hermetical Live Center (with Function of Anti-water & Anti-dust)



Model	D	D1	L
MT3	57	23.825	220
MT4	65	31.267	176

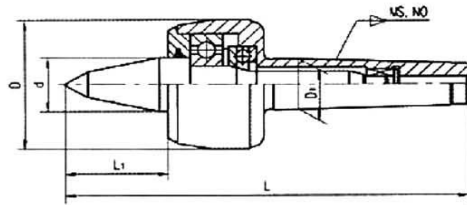


## Tool Holders

### Live Centers

#### 加长型回转顶尖

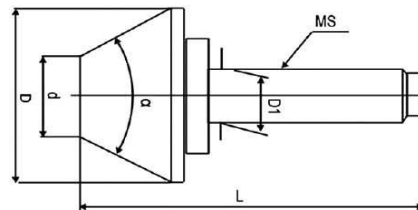
#### Live Centers with Extension Tip



Model	L	D	L1	d	D1	Max Speed
MT2	139	45	34	20	17.780	5000
MT3	176.5	60	47	25	23.825	4200
MT4	217	70	53	32	31.267	3800
MT5	273	90	65	40	44.399	3000

#### 伞型回转顶尖

#### Bull Nose Live Center



Model	D	D1	L	d	$\alpha$
MT2×85	85	17.780	126	12	75°
MT2×60	60	17.780	137	20	60°
MT2×70	70	17.780	137	20	60°
MT3×80	80	23.825	166	25	60°
MT3×90	90	23.825	169	32	60°
MT3×100	100	23.825	160	30	75°
MT4×100	100	31.267	206	32	60°
MT4×110	110	31.267	184	35	75°
MT4×160	160	31.267	210	12	75°
MT4×80	80	31.267	167	32	75°
MT4×200	200	31.267	225	40	75°
MT5×80	80	44.399	199	12	75°
MT5×100	100	44.399	206	32	75°
MT5×120	120	44.399	251	40	60°
MT5×200	200	44.399	252	40	75°
MT5×250	250	44.399	281	56	75°
MT6×250	250	63.348	335	56	75°

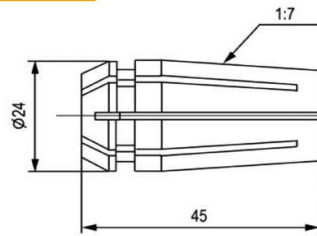


## Tool Holders

### Components for Wood-working Machines

#### J7316A型套装铣夹头

#### 7316A Collets & Chuck Set



Collets Taper: 1:7

Model	Hole Size		PCS/Set	Shank	Wt
	mm	in			
J7316A / NT30	4	1/8"	8	NT30	3.373
J7316A / NT40	5	3/16"		NT40	3.708
	6	1/4"			
J7316A / MT2	8	5/16"		MT2	3.52
	10	3/8"			
J7316A / MT3	12	1/2"		MT3	3.752
	14	9/16"			
J7316A / MT4	16	5/8"		MT4	4.646

#### 直柄套装铣夹头

#### ER Collets Extension Bar Set



20CrMnTi

≥12000rpm



Model	Qty. & Clamping	Back Bar Thread	Wt.	
C16	50L×ER11	M10	0.6	
	100L×ER11		0.7	
C20	100L×ER16	M12	1.15	
	150L×ER16		1.25	
C25	100L×ER20	M12	1.4	
	100L×ER25		7 PCS(6-16mm)	1.9
			15 PCS(2-16mm)	2.5



## Tool Holders

### Components for Wood-working Machines

#### 木工钻夹头

#### Drill Chucks with Connecting Arbor

扳手型



Key-type Drill Chuck + Arbor	Shank
1.5-13mm B16	MT2 - B16
1/16" - 1/2" JT6	MT2 - JT6

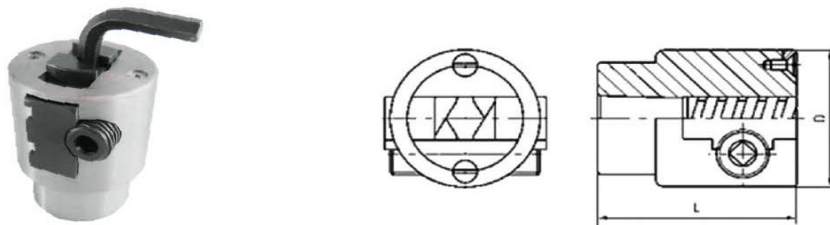
自紧型



Keyless Drill Chuck + Arbor	Shank
3-16mm B18	MT2 - B18
1/8" - 5/8" JT33	MT2 - JT33

#### 二爪木工夹头

#### 2-Jaw Tapping Chuck



Model	Capacity	Mount	D	L
YJ16-J3	0~16	JT3	54	70
YJ16-J6		JT6		
YJ16-B16		B16		
YJ16-M20×1.5		M20×1.5		

#### 木工夹具组

#### Mounting Kit for Wood-working Machines



Model	Taiwan Code	Table Slot	Stud Size
M8	CK-08	10	8-1.25P
M10	CK-10	12	10-1.25P
M12	CK-12	14	12-1.75P



## Tool Holders

### Components for Wood-working Machines

#### 木工顶尖

#### Live Centers for Wood-working Machines



\* The size of above products is MT2.

#### 木工插入式回转顶尖

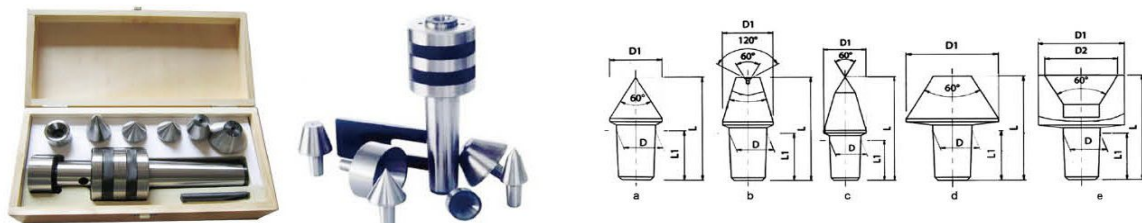
#### Multi-purpose Live Centers for Wood-working Machines



Model	D	L1	a	b	c	d	e	
			D1				D1	D2
MT2	10	14	20	15	20	35	16	6
MT3	12	18	24	18	24	45	22	10

#### 大号插入式回转顶尖

#### Multi - purpose Live Centers



Model	D	L1	a	b	c	d	e	
			D1				D1	D2
MT4	14	22	32	24	32	55	28	12
MT5	20.5	30	40	36	40	70	36	16



## Tool Holders

### Components for Wood-working Machines

#### 桌虎钳

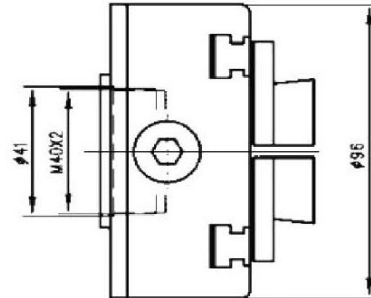
#### Table Vices

Model	Width of jaw	Max. Opening	G.W./N.W. kg
Z50	50	45	30/26(10PCS)
Z60	60	55	30/26(10PCS)



#### 木工卡盘

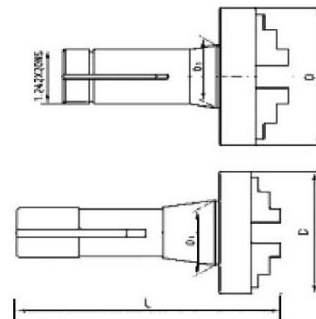
#### Wood-Working Scroll Chuck



1. The chuck is self-centering, grips internally and externally, can hold round and square workpiece.
2. The chuck fits a wide range of wooden lathe spindle by connecting arbor.

#### 接柄木工卡盘

#### Wood-Working Scroll Chuck with Arbor



Model	Shank	D1	D	
			in	mm
R8-QCC-D	R8	31.75	3	80
5C-QCC-D	5C	37.5		100
MS2-QCC-D	MS2	17.78	4	125
MS3-QCC-D	MS3	23.825	5	130
MS4-QCC-D	MS4	31.267	6	160
MS5-QCC-D	MS5	44.399		200

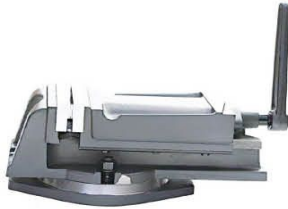


## Tool Holders

### Machine Vices

#### 铣床平口钳

#### Q12 Milling Machine Vices (Q12 = QH)



##### Performance and character:

1. It is made of ductile cast iron.
2. The accuracy of vice is (parallelism and squareness) 0.025mm/100mm.
3. It is widely used on milling and drilling machine for making some kinds of slots, holes and faces

Model	Width of jaw	Height of jaw	Max. Opening	G.W./N.W.
Q1280	80	30	60	38/28(4PCS)
Q12100	100	35	80	40/28(4PCS)
Q12125	125	40	100	17/16
Q12160	160	52	125	38/36
Q12200	200	63	160	54/52

#### 刨床平口钳

#### Q13 Planning Machine Vices (Q13 = QB)



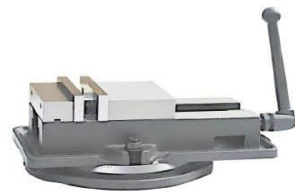
##### Performance and character:

1. It is made of ductile cast iron.
2. The accuracy of vice is (parallelism and squareness) 0.025mm/100mm.
3. It is widely used on milling and drilling machine for making some kinds of slots, holes and faces

Model	Width of jaw	Height of jaw	Max. Opening	G.W./N.W.
Q136	136	36	170	18/17
Q160	160	51	180	24/23
Q200	200	64	280	43/41
Q250	250	64	280	69/67
Q320	320	81	360	94/88

#### 角固式平口钳

#### QM16 Accu-lock Machine Vices



##### Performance and character:

1. It is made of ductile cast iron.
2. The accuracy of vice is (parallelism and squareness) 0.025mm/100mm.
3. The vice can be used with single or settled side by side on the machine Worktable.
4. It is widely used on machining center and other precision machine.

Model	Width of jaw	Height of jaw	Max. Opening	G.W./N.W.
QM16100	100	32	100	17/16
QM16160	160	45	160	37/36
QM16200	200	50	190	62/56



## Tool Holders

### Machine Vices

#### 角固式精密平口钳

#### QM16N Accu-lock Precision Machine Vices



##### Performance and character:

- 1.It is made of ductile cast iron.
- 2.The accuracy of vice is (parallelism and squareness) 0.025mm/100mm.
- 3.The vice can be used with single or setted side by side on the machine Worktable.
- 4.It is widely used on machining center and other precision machine

Model	Width of jaw	Height of jaw	Max. Opening	G.W./N.W.
QM16100N	100	32	100	17/16
QM16160N	160	45	160	37/36

#### Q52型液压增力平口钳

#### Q52 Hydraulic Power Machine Vices



##### Performance and character:

- 1.It is made of ductile cast iron.
- 2.The accuracy of vice is (parallelism and squareness) 0.025mm/100mm.
- 3.According the size of the workpiece, changing the position of the screw nut, it can have four opening.

Model	Width of jaw	Height of jaw	Max. Opening	G.W./N.W.
Q52160	160	51	125	57/50
Q52200	200	63	160	70/64

#### Q41型可倾式平口钳

#### Q41 Declinable Machine Vices



Model	Width of jaw	Max. Opening	G.W./N.W.
Q41100	100	80	19/18
Q41125	125	100	29/27.5
Q41125L	125	140	29/27.5
Q41160	160	125	43/41.5

#### QW型万向平口钳

#### QW Universal Machine Vices



##### Performance and character:

- 1.It is made of high-quality cast iron.
- 2.The accuracy of vice is (parallelism and squareness) 0.025mm/100mm.
- 3.It used on machining and EDM complex parts.

Model	Width of jaw	Height of jaw	Max. Opening	G.W./N.W.
QW100	105	40	105	31/26
QW125	125	44	125	33/28





## Tool Holders

### Machine Vices

Q19德式钻床平口钳

Q19 Drilling Machine Vices(German)



Model	Width of jaw	Max. Opening	G.W./N.W.
Q1965	65	45	11.5/10(10PCS)
Q1975/80	75/80	50	22/20(10PCS)
Q19100	100	75	34/31(10PCS)
Q19125	125	100	39/37(8PCS)
Q19150	150	125	37/35(5PCS)
Q19200	200	175	49/46(4PCS)

Q19E丝杠缩入式钻床平口钳

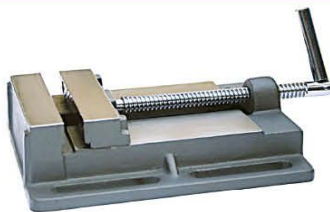
Q19E Guild-screw leading-in Drilling Machine Vices



Model	Width of jaw	Max. Opening	G.W./N.W.
Q1985E	85	60	32/30(10PCS)
Q19100E	100	75	38/36(8PCS)
Q19120E	120	100	40/38(6PCS)
Q19150E	150	125	36/34(4PCS)
Q19150	150	125	37/35(5PCS)
Q19200	200	175	49/46(4PCS)

Q19A 美式钻床平口钳

Q19A Drilling Machine Vices(American)



Model	Width of jaw	Max. Opening	G.W./N.W.
Q192-1/2A	67	70	21/19(10PCS)
Q193A	78	78	22/20(10PCS)
Q194A	100	110	32/30(10PCS)
Q195A	125	128	44/42(8PCS)
Q196A	150	150	36/34(5PCS)

SY手板压力机

SY Arbor Presses



Model	Pressure	Opening	G.W./N.W.
0.5t	5	90	11/10
1t	10	110	17/16
2t	20	180	39/38
3t	30	285	69/67
5t	50	430	176/154

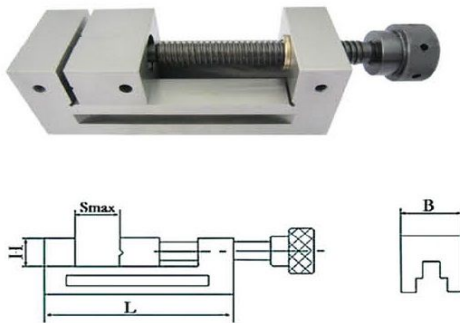


## Tool Holders

### Machine Vices

#### QGG 精密工具平口钳

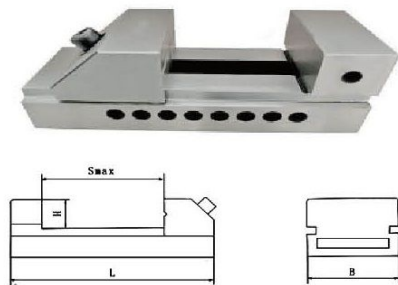
#### QGG Precision Tool Vices



Model	B	H	S-max	L	Wt .
QGG50	50	25	65	155	3
QGG60	60	25	55	110	2.4
QGG63	63	32	85	190	3.8
QGG73	73	35	100	210	5
QGG80	80	40	100	220	6.5
QGG88	88	40	125	250	11
QGG100	100	45	125	260	13
QGG125	125	50	160	300	19.5
QGG125A	125	50	210	350	23
QGG150	150	50	175	315	23.8

#### QKG 精密工具平口钳

#### QKG Precision Tool Vices



Model	B	H	S-max	L	Wt .
QKG25	25	9.15	22	65.4	0.5
QKG50	50	25	65	140	2.0
QKG63	63	32	85	175	3.0
QKG80	80	40	100	200	5.5
QKG100	100	45	125	245	10.0
QKG150	150	50	200	330	21.5

#### 十字系列多功能夹具

#### Q97 Cross Multifunction Clamps



#### Performance and character:

1. Cross clamp is used two mutually perpendicular feeding mechanisms, it can be moved in the direction of X and Y at the same time, and it can be rotated 360° with a swivel base.
2. It can be used as an attachment for milling machine and grinding machine or as a tool used only.

Model	Width of jaw	Height of jaw	Max. Opening	G.W./N.W.
Q97-75	75	35	76	7.8/7.2
Q97-100	102	35	90	9.5/9
Q97-125	125	41	115	14.2/13.5
Q97-150	152	42	135	17.7/16.7
Q97-200	203	47	165	25/26.3



## Tool Holders

### Bench Vices

#### 83型活动带砧式台钳 (重型)

83 Type With Anvil Swivel Base Bench Vices (Heavy Duty)



Size	Width of jaw	QTY/Case	G.W./N.W.
3"	75	4	28/26
4"	100	2	23/22
5"	125	1	20/19
6"	150	1	30/29
8"	200	1	44/42
10"	250	1	70/62
12"	300	1	75/68

#### 83型固定带砧式台钳 (重型)

83 Type With Anvil Stationary Base Bench Vices (Heavy Duty)



Size	Width of jaw	QTY/Case	G.W./N.W.
3"	75	4	22/20
4"	100	2	22/20
5"	125	1	18/17
6"	150	1	28/26
8"	200	1	42/40

#### 83型活动无砧式台钳 (重型)

83 Type Without Anvil Swivel Base Bench Vices (Heavy Duty)



Size	Width of jaw	QTY/Case	G.W./N.W.
3"	75	4	24/22
4"	100	2	22/20
5"	125	1	18/17
6"	150	1	28/26
8"	200	1	42/40

#### 83型固定无砧式台钳 (重型)

83 Type Without Anvil Stationary Base Bench Vices (Heavy Duty)



Size	Width of jaw	QTY/Case	G.W./N.W.
3"	75	4	24/22
4"	100	2	22/20
5"	125	1	18/17
6"	150	1	28/26
8"	200	1	42/40



## Tool Holders

### Bench Vices

#### 89型活动带砧式台钳 (轻型)

89 Type With Anvil Swivel Base Bench Vices (Light Duty)



Size	Width of jaw	QTY/Case	G.W./N.W.
3"	75	4	20/18
4"	100	4	30/28
5"	125	2	28/26
6"	150	1	21/20
8"	200	1	31/30
10"	250	1	47/45

#### 89型固定带砧式台钳 (轻型)

89 Type With Anvil Stationary Base Bench Vices (Light Duty)



Size	Width of jaw	QTY/Case	G.W./N.W.
4"	100	4	30/28
5"	125	2	28/26
6"	150	1	21/20
8"	200	1	31/30

#### 89型活动无砧式台钳 (轻型)

89 Type Without Anvil Swivel Base Bench Vices (Light Duty)



Size	Width of jaw	QTY/Case	G.W./N.W.
4"	100	4	30/28
5"	125	2	28/26
6"	150	1	21/20
8"	200	1	31/30

#### 89型固定无砧式台钳 (轻型)

89 Type Without Anvil Stationary Base Bench Vices (Light Duty)



Size	Width of jaw	QTY/Case	G.W./N.W.
4"	100	4	22/20
5"	125	2	22/20
6"	150	1	18/17
8"	200	1	26/25

#### 家用台钳

Home Vices



Size	Width of jaw	QTY/Case	G.W./N.W.
3-1/2"	87.5	6	30/27
4"	100	4	21.5/19

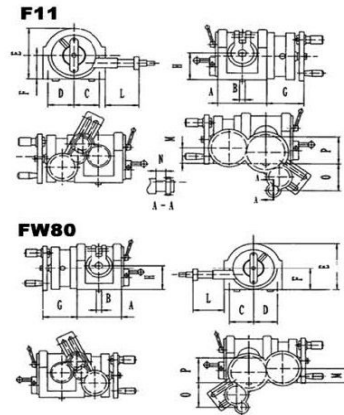


## Tool Holders

### Dividing Heads

万能分度头

Universal Dividing Heads



FW80、F11 Series Installation Sketch and Dimensions:

Model	A	B	C	D	E	F	G	H	L	M	N	O	P
FW80	139	14	77	73	147	77	98	80	106	43	30	60	80
F11100A	162	14	102	87	186	95	116	100	93	54.7	30	100	100
F11125A	209	18	116	98	224	117	120	125	103	68.5	34.5	100	125
F11160A	209	18	116	98	259	152	120	160	103	68.5	34.5	100	160

FW80、F11 Series Main Specifications:

Items	Specifications	FW80	F11100A	F11125A	F11160A
Center height mm		80	100	125	160
Swivel angle of spindle from it's horizontal position		≤90°	≤95°		
Horizontal position (downward)		≤6°	≤5°		
Rotating angle of spindle for one complete Revolution of dividing handle		9°(540 grad., 1' each)			
Min .reading of Venier		10"			
Worm gear ratio		1:40			
Taper of spindle bore		MT3		MT4	
Width of locating key. mm		14		18	
Diameter of short taper of spindle for mounting flange mm		Φ36.541	Φ41.275	Φ53.975	Φ53.975
Hole numbers on index plate	1st plate	24,25,28,30,34,37,38,39,41,42,43			
	2nd plate	46,47,49,51,53,54,57,58,59,62,66			
Change Gear	Module	1.5		2	
	Teeth Numbers	25,30,35,40,50,55,60,70,80,90,100			
Individual indexing error of the spindle for one complete revolution of dividing handle		60"	±45"		
Cumulate error at any 1/4 periphery of spindle		±1'			
Max. bearing kgs		80	100	130	130



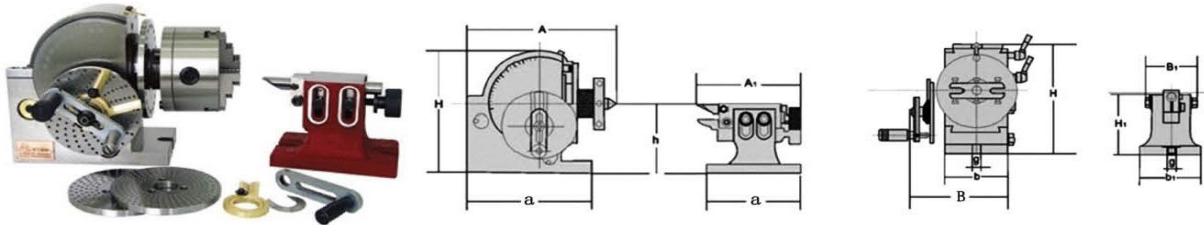
## Tool Holders

### Dividing Heads

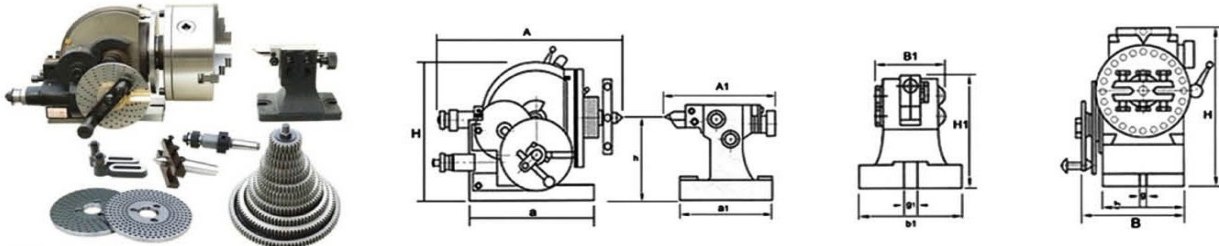
#### 半万能分度头

#### Semi-universal Dividing Heads

##### BS0 & BS1



##### BS2



#### Semi-universal Index Centers

Model	A	B	H	h	Taper of Center	N.W.
BS0	193	131	173	100	MT2	21
BS1	242	168	220	128	MT3	30
BS2	370	280	236	133	MT4	73

#### Semi-universal Index Centers BS 0, BS 1, BS 2 (Tail-Stock)

Model	A1	B1	H1	h	a1	b1	g1
BS0	175	87	12	109	130	92	16
BS1	183	87	137	128	158	110	16
BS2	183	87	156	133	175	122	16

#### 蜂巢板

#### Dividing Plate A & B

##### Number of holes on Dividing Plates A & B:

A: 34, 37, 38, 39, 41, 43, 44, 50, 52, 56, 61

B: 46, 47, 49, 51, 53, 54, 57, 58, 59, 62, 64



Standard Accessories

Numbers of Hole	Plate A	15	16	17	18	19	20
	Plate B	21	23	27	29	31	33
	Plate C	37	39	41	43	47	49

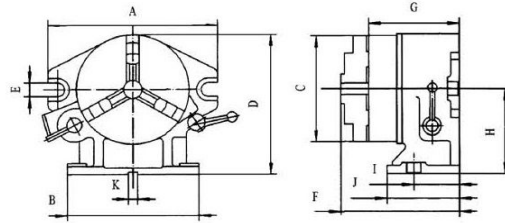


## Tool Holders

### Dividing Heads

#### F2型立卧等分分度头

#### Direct Dividing Head, Type F2



Installation sketch and dimensions:

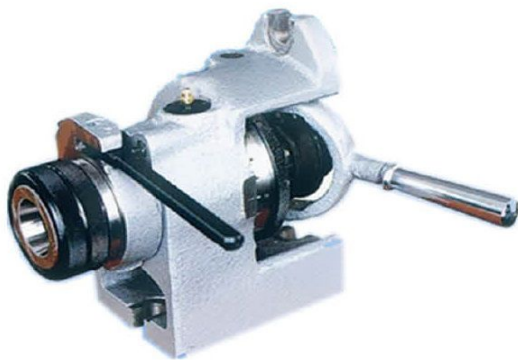
Model	A	B	C	D	E	F	G	H	I	J	K
<b>F2-8</b>	310	255	Φ210	255.25	18	214	171.5	149.25	80	150	16
<b>F2-6</b>	260	220	Φ167	220	18	197.5	155.5	130	70	130	16

Main specifications

Items	Specifications	F2-8	F2-6
Center height mm		149.25	30
Center diameter of the spindle mm		Φ119.774	Φ80
Divisions		2、3、4、6、8、12、24	
Height between external centering diameter of the spindle to the base (in vertical position)mm		96	89.5
Locating diameter of the spindle mm		Φ212	Φ170
Width of the locating key mm		16	
Matched chuck		K31210A	K31167
24 divisions individual error		25"	

#### FNL100B型立卧等分分度头

#### FNL 100B Horizontal / Vertical Collets Index



Items	FNL100B
Center height mm	10.16
Min. ID of spindle mm	Φ31.75
Divisions	2、3、4、6、8、12、24
Spindle screw	2.25×8
Collets	5C
Dividing accuracy	±3'
Net weight kgs	12
Gross weight kgs	15
Case dimensions mm	284*250*260

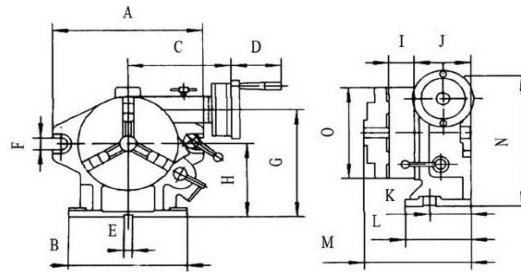


## Tool Holders

### Dividing Heads

#### F3型立卧等分分度头

#### Direct Dividing Head, Type F3



Installation Sketch and Dimensions:

Model	A	B	C	D	E	F	H	I	J	K	L	M	L	O
F3-8"	310	255	200	78	16	18	150	75	126	90	155	244	285	Φ210
F3-6"	250	220	188	78	16	18	130	66	112	80	150	220	235	Φ167

#### Main Specifications

Items	A	B
Center height mm	150	130
Center diameter of the spindle mm	Φ119.774	Φ80
Diameter of spindle shoulder mm	Φ212	Φ170
Divisions	2、3、4、6、8、12、24	
Graduated disc of spindle	360°	
Modules of worm and worm gear	1.5	1.25
Transmission ratio of worm and worm gear	1:90	
Showed degree of worktable per revolution of worm	4°	
Minimum value of vernier	10"	
Width of the locating key mm	16	
Matched chuck	K31210A	K31167
24 divisions individual error	25"	
Worm gear dividing error	±60"	
Case dimensions mm	490×425×380	470×350×360



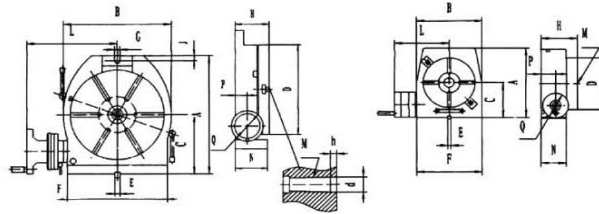


## Tool Holders

### Rotary Tables

#### 立卧回转工作台

#### Vertical/Horizontal Rotary Tables



#### Main Specifications

	TSL100	TSL160	TSL200 (T13200)	TSL250 (T13250)	TSL320 (T13300)	TSL400
A	125	242	285	328	410	525
B	125	196	236	286	360	450
C	70	125	150	170	210	260
D	Φ100	Φ160	Φ200	Φ250	Φ320	Φ400
E	10	12	14		18	
F	125	186	208	253	320	400
G	/	12	14		18	
H	70	85	100	110	120	150
J	/	12	15	16		
L	114	194	211	241	273	337
M	MT2		MT3		MT4	
N	48	82	99	106	118	145
P	30	37	48			70
Q	50	125			140	160
d	Φ20	Φ25	Φ30		Φ40	
h	8	6			10	

#### Main Specifications

Items	Specifications		TSL100	TSL160	TSL200(T13200)	TSL250(T13250)	TSL320(T13300)	TSL400
Diameter of table mm			Φ100	Φ160	Φ200	Φ250	Φ320	Φ400
Morse taper of the center hole			2#		3#		4#	
Diameter of the center hole mm			Φ20×8	Φ25×6	Φ30×6		Φ40×10	
Height of center for Vert. mounting mm			70	125	150	170	210	260
Width of the T-slot mm			6	10	12		14	
Adjacent angle of table T-slot			90°			60°		
Width of locating key mm			10	12	14		18	
Module of the worm gear			1	1.5	1.75	2	2.5	3.5
Transmission ratio of the worm gear			1:72	1:90				
Graduation of the table			360°					
Readout of the handwheel			2'	1'				
Minimum reading of the vernier			10"					
Indexing accuracy			120"	80"	60"			
Max.bearing(with table Hor.)kgs			20	100	150	200	250	300
Max.bearing(with table Vert.)kgs			10	50	75	100	125	150
Net weight kgs			7	23	31.5	46	77	150
Gross weight kgs			8	30	42	57	92	175

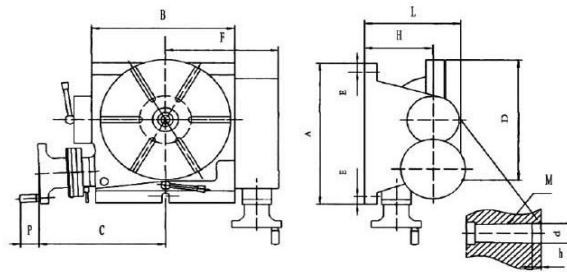


## Tool Holders

### Rotary Tables

可倾回转工作台

Tilting Rotary Tables



Installation Sketch and Dimensions:

	TSK160	TSK200	TSK250	TSK320	TSK400
A	255	296	310	380	500
B	172	213	252	322	400
C	168	186	235	252	306
D	160	200	250	320	400
E	11	14		16	
F	138	175.5	199	241	295
H	100	120	140	175	217
L	160	180	205	255	320
M	MT2	MT3		MT4	
P		40			50
d	25		30	40	
h		6		10	

Main Specifications

Items	Specifications	TSK160	TSK200	TSK250	TSK320	TSK400
Diameter of table mm		Φ160	Φ200	Φ250	Φ320	Φ400
Morse taper of the center hole		2#	3#		4#	
Diameter of the center hole mm		Φ25×6	Φ30×6		Φ40×10	
Width of the T-slot mm		10	12		14	
Module of the worm gear		1.5	2		2.5	3.5
Width of the locating key mm		12	14		18	
Adjacent angle of table T-slot		90°		60°		
Transmission ratio of the worm gear		1:90				
Graduation of the table		360°				
Tilting angle		0°~90°				
Readout of the handwheel		1'				
Minimum reading of the vernier		10"				
Minimum reading of the tilting vernier		2'				
Indexing accuracy		80"	60"			
Max.bearing(with table Hor.)kgs		100	150	200	250	300
Max.bearing(with table Vert.)kgs		50	75	100	125	150

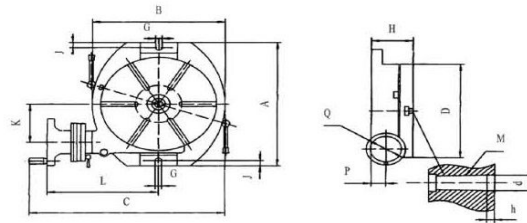
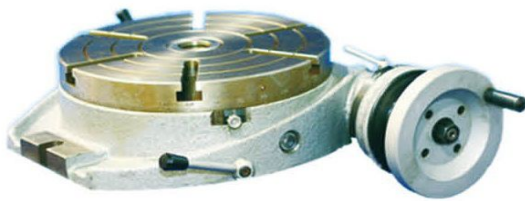


## Tool Holders

## Rotary Tables

### 卧式回转工作台

### TS Horizontal Rotary Tables



Installation Sketch and Dimension

	TS160A	TS200A	TS250A	TS320A	TS400A	TS500A	TS630A	TS800A	TS1000A
<b>A</b>	260	290	330	410	530	640	820	1000	1170
<b>B</b>	196	236	286	360	450	560	700	890	1080
<b>C</b>	332	369	422	493	612	753	898	1080	1295
<b>D</b>	Φ160	Φ200	Φ250	Φ320	Φ400	Φ500	Φ630	Φ800	Φ1000
<b>G</b>	12	14		18		22		22	-
<b>H</b>	75	80	90	110	140	158.5	160	215	250
<b>J</b>	12	14		18		22		30	-
<b>K</b>	76	91.25	102.5	128.5	180	230	295	364	364
<b>L</b>	194	211	241	273	337	393	468	535	654
<b>M</b>	MT2	MT3		MT4		MT5		MT6	
<b>P</b>	27	27	30.5	44	60	65	68	76	106
<b>d</b>	Φ25	Φ30		Φ40		Φ50		Φ75	
<b>h</b>	6	10		12		14			

### Main Specifications

Items	Specifications	TS160A	TS200A	TS250A	TS320A	TS400A	TS500A	TS630A	TS800A	TS1000A	
Table diameter mm		Φ160	Φ200	Φ250	Φ320	Φ400	Φ500	Φ630	Φ800	Φ1000	
Morse taper of the hole mm		2#	3#		4#		5#		6#		
Diameter of the center hole mm		Φ25×6	Φ30×6		Φ40×10		Φ50×12		Φ75×14		
Width of the T-slot mm		10	12		14		18		22		
Adjacent angle of table T-slot		90°	60°				45°				
Width of the locating key mm		12	14		18		-	-	-	-	
Modules of worm and worm gear		1.5	1.75	2	2.5	3.5		4.5	5.5		
Transmission ratio of the worm gear		1:90					1:120				
Graduation of the table		360°									
Rotating angle of table with one revolution of the worm		4°(1' per graduation)					3°(1' per graduation)				
Minimum value of vernier		10"									
Indexing accuracy		80"		60"							
Max.workload kgs		100	150	200	250	300	550	700	1250	2000	

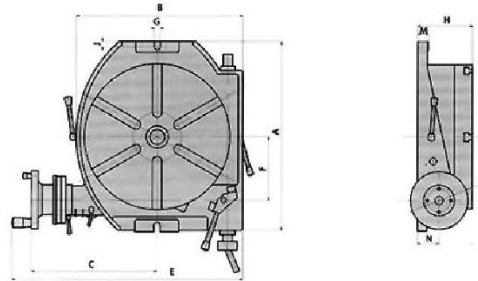
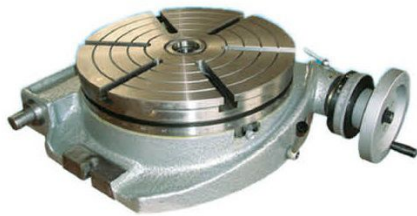


## Tool Holders

### Rotary Tables

#### T11系列机动转台

#### T11 Power-Operated Rotary Table



Model	A	B	C	D	E	F	G	H	J	M	H
T11320	410	371	276	125	507	128.5	18	125	16	28	40
T11400	530	463	347	160	635	177.5	18	150	16	30	55

Items	Specifications	T11320	T11400
Diameter of table mm		Φ320	Φ400
Morse taper of the center hole		4#	
Diameter of the center hole mm		Φ40	
Width of the T-slot mm		14	14
Width of the locating key mm		18	18
Modules of worm gear		2.5	3.5
Transmission ratio of the worm gear		1:90	
Graduation of the table		360°	360°
Rotating angle of table with one revolution of the worm		4°(1' per graduation)	
Minimum reading of vernier		10"	
Indexing accuracy		60"	
Net weight kgs		83	145
Gross weight kgs		100	165
Case dimensions mm		690*530*253	820*640*280



## Tool Holders

### Tailstock

#### WZK系列可调尾座

#### Adjustable Tailstock, WZK Series

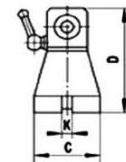
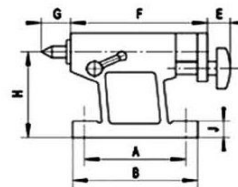
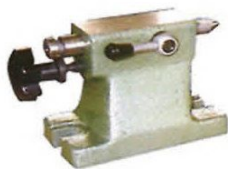


**Note :** Type WZK100-1 adjustable tailstock is matched FNL100B. Type WZK140 adjustable tailstock is matched to TSL160. Type WZK180 Adjustable tailstock is matched to TSL200 and TSL250. WZK224 adjustable tailstock is Matched to TSL320.

Items	WZK100-1	WZK140	WZK180	WZK224
Distance between taper center to base mm	Max.100 Min.80	Max.140Min.100	Max.180Min.140	Max.224Min.180
Taper of Center			MT2	MT2
Width of locating key mm	12	14	14	18
Tilting angle of center axes	±11°			
Stroke of center mm	25			
Net weight kgs	6	8	14.5	16.5
Gross weight kgs	8	10	18.5	21
Case dimensions mm	257*230*192	284*230*194	353*308*223	398*308*223

#### WZ系列固定尾座

#### Tailstock, WZ series



Items	WZ70	TSL400-2
Distance between taper center to base mm	70	260
Taper of Center	-	MT3
Width of locating key mm	10	18
Stroke of center mm	12	30
Net weight kgs	2.5	28
Gross weight kgs	3	32
Case dimensions mm	200*120*202	375*355*260



## Tool Holders

### Steel Clamping Kit

万能夹具组

Steel Clamping Kit, 58PCS / SET(52PCS / SET)



M 8 - M16



M18- M24

Heat treated steel black oxide finish.  
Block size 25mm. Set in plastic rack or wooden plate consists of:  
24pcs Studs (75/100/125/150/175/200mm),  
6pcs T-Nuts, 4pcs Coupling Nuts  
6pcs Flange Nuts  
6pcs Step Clamps  
6pcs Step Blocks

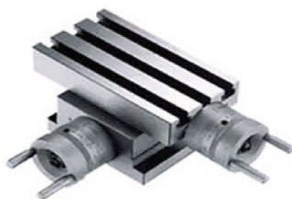
The parts of each specification can be all purchased individually.

Model	Taiwan Code	Table Slot	Stud Size	G.W.	GB
M 8	CK-08	10	8-1.25P	7	-
M10	CK-10	12	10-1.25P	9	3/8-16
M12	CK-12	14	12-1.75P	10	1/2-12
M14	CK-14	16	14-2.0P	11	-
M16	CK-16	18	16-2.0P	13	5/8-11
M18	CK-18	20	18-2.5P	25	-
M20	CK-20	22	20-2.5P	26	3/4-10
M22	CK-22	24	24-3.0P	30	7/8-9

Remark: 52, 42, & 36PCS / SET for your choice.

十字工作台

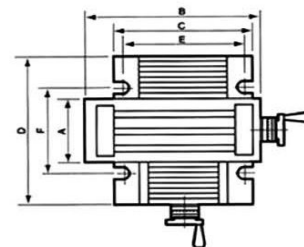
Precision Cross Tables



SCT-100



SCT-150,200,250



Model	A	B	C	D	E	F	Route
SCT-100	100	185	135	100	115	50	50×80
SCT-150	150	350	250	300	220	205	150×175
SCT-200	200	500	300	400	250	290	200×250
SCT-250	250	600	400	500	340	430	250×300

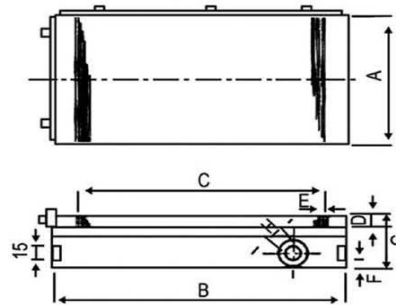


## Tool Holders

### Magnetic Chucks

#### 矩形永磁吸盘

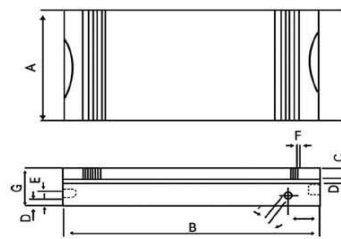
Permanent Magnetic Chucks, Rectangular;  
X41 Series



Metric	Inch	Dimension							
		A	B	C	D	E	F	G	H
X41 150×150	6"×6"	150	150	104	20	4.8(1+3.8)	10	55	12
X41 150×300	6"×12"	150	300	254	20	4.8(1+3.8)	10	55	12
X41 150×350	6"×14"	150	350	304	20	4.8(1+3.8)	10	55	12
X41 150×400	6"×16"	150	400	354	20	4.8(1+3.8)	10	55	12
X41 150×450	6"×18"	150	450	404	20	4.8(1+3.8)	10	55	12
X41 200×400	6"×16"	200	400	354	20	4.8(1+3.8)	10	55	12
X41 200×450	6"×18"	200	450	404	20	4.8(1+3.8)	10	55	12
X41 200×500	6"×20"	200	500	454	20	4.8(1+3.8)	10	55	12

#### 强力密极永磁吸盘

Powerful Dense Permanent Magnetic Chucks;  
XM91 Series



Metric	Inch	Dimension							
		A	B	C	D	E	F	G	I
XM91 100×175	4"×7"	100	175	18	10	10	2(0.5+1.5)	53	12
XM91 125×250	5"×16"	125	250	18	10	10	2(0.5+1.5)	53	12
XM91 150×150	6"×6"	150	150	18	10	10	2(0.5+1.5)	53	12
XM91 150×300	6"×12"	150	300	18	10	10	2(0.5+1.5)	53	12
XM91 150×350	6"×14"	150	350	18	10	10	2(0.5+1.5)	53	12
XM91 150×400	6"×16"	150	400	20	10	10	2(0.5+1.5)	53	12
XM91 150×450	6"×18"	150	450	20	10	10	2(0.5+1.5)	53	12
XM91 200×400	8"×16"	200	400	20	10	10	2(0.5+1.5)	53	12
XM91 200×450	8"×18"	200	450	20	10	10	2(0.5+1.5)	53	12
XM91 200×500	8"×20"	200	500	20	10	10	2(0.5+1.5)	53	12

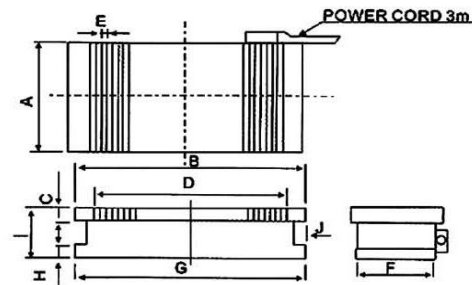
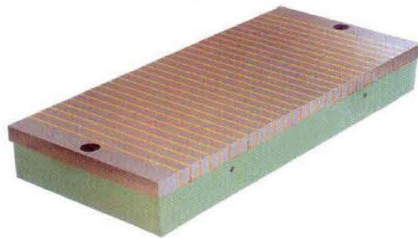


## Tool Holders

### Magnetic Chucks

矩形普通电磁吸盘

General Rectangular Electro-Magnetic Chucks;  
X11 Series



Metric	Inch	Dimension								
		A	B	C	D	E	F	G	I	J
X11 200×630	8"×25"	200	630	30	550	19(3+16)	192	616	100	30
X11 250×500	10"×20"	250	500	22	400	19(3+16)	244	494	95	30
X11 300×600	12"×24"	300	600	30	510	22(4+18)	285	590	88	30
X11 300×680	12"×26"	300	682	30	600	22(4+18)	296	730	116	30
X11 300×800	12"×32"	300	800	30	730	22(4+18)	296	795	116	12
X11 300×1000	12"×40"	300	1000	30	900	22(4+18)	294	990	110	12
X11 320×800	13"×32"	320	800	30	704	22(4+18)	314	790	100	12
X11 320×1000	13"×40"	320	1000	30	900	22(4+18)	314	990	110	12
X11 400×800	16"×32"	400	800	30	704	19(3+16)	392	816	105	10
X11 400×1000	16"×40"	400	1000	30	904	19(3+16)	392	996	105	10
X11 500×1000	20"×40"	500	1000	30	858	19(3+16)	492	1016	105	10
X11 600×1000	24"×40"	600	1000	32	858	19(3+16)	592	1016	107	10
X11 800×1000	32"×40"	800	1000	32	858	19(3+16)	795	1026	115	15
X11 500×1500	20"×60"	500	1500	32	1372	22(4+18)	492	1490	112	15
X11 200×630	8"×25"	200	630	30	550	19(3+16)	192	616	100	30



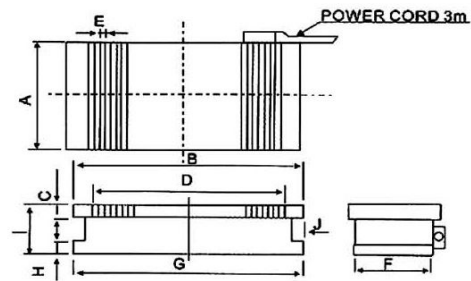
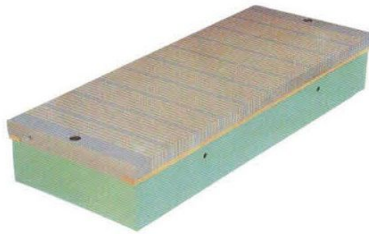


## Tool Holders

### Magnetic Chucks

#### 矩形密极电磁吸盘

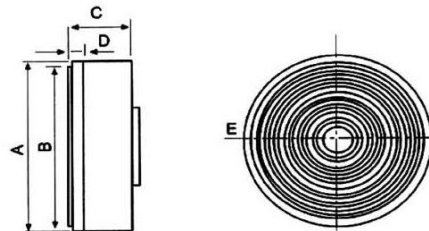
Rectangular Dense Magnetic-pole Chucks;  
XM Series



Metric	Inch	Dimension								
		A	B	C	D	F	G	H	I	J
XM11 250×500	10"×20"	250	500	22	400	244	494	20	95	30
XM11 300×600	12"×24"	300	600	30	510	285	590	20	88	30
XM11 300×800	12"×32"	300	800	30	730	296	795	20	116	12
XM11 400×800	16"×32"	400	800	30	704	392	816	20	105	10
XM11 400×1000	16"×40"	400	1000	30	904	392	996	20	105	10
XM11 500×1000	20"×40"	500	1000	30	858	492	1016	20	105	12

#### 圆形电磁吸盘

Circular Electric Magnetic Chucks;  
X21 Series



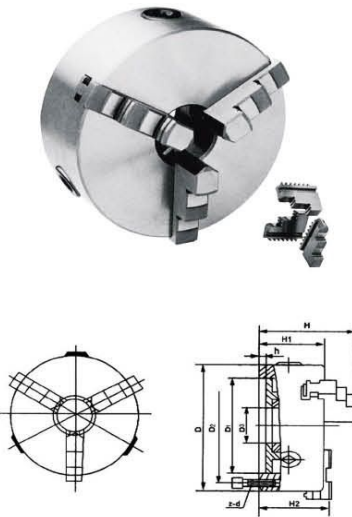
Metric	Inch	Dimension				
		A	B	C	D	E
X21 500	20"	510	500	100	25	12
X21 630	25"	650	630	130	30	14
X21 780	31"	780	770	200	35	18
X21 800	32"	810	800	180	35	13
X21 1000	40"	1060	1036	156	35	20



## Tool Holders

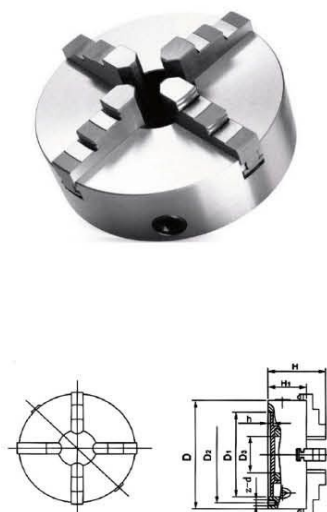
### Lathe Chucks

#### K11 系列三爪自定心卡盘 K11 Series 3-Jaw Self-centering Chucks



Size	D1	D2	D3	H	H1	h	z-d
80	55	66	16	66.5	50	4	3-M6
100	72	84	22	74.5	55	3	3-M8
125	95	108	30	84.5	58	4	3-M8
130	100	115	30	86.5	60	5	3-M8
160	130	142	45	94	65	5	3-M8
200	165	180	65	109	75	5	3-M10
240	195	215	70	120	80	8	3-M12
250	206	226	80	120	80	5	3-M12
315	260	285	100	147.5	90	6	3-M16
320	270	290	100	147.5	90	6	3-M16
380	325	350	130	173.5	100	6	3-M16
400	340	368	130	173.5	100	6	3-M16
500	440	465	210	202	115	6	6-M16
630	545	586	252	220.5	135	7	6-M16

#### K12 系列四爪自定心卡盘 K12 Series 4-Jaw Self-centering Chucks



Size	D1	D2	D3	H	H1	h	z-d
125	95	108	30	84	58	3.5	3-M8
130	100	115	30	86	60	3.5	3-M8
160	130	142	40	95	65	5	3-M8
160A	130	142	40	109	65	5	3-M8
200	165	180	65	109	75	5	3-M10
200C	165	180	65	122	75	5	3-M10
200A	165	180	65	122	75	5	3-M10
250	206	226	80	120	80	5	3-M12
250C	206	226	80	130	80	5	3-M12
250A	206	226	80	136	80	5	3-M12
325	272	296	100	154	96	12	3-M16
325A	272	296	100	170	96	12	3-M16

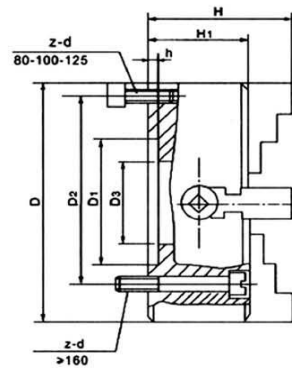


## Tool Holders

### Lathe Chucks

#### K72系列四爪单动卡盘

#### K72 Series 4-Jaw Independent Chucks



Size	Size D inch	D1	D2	D3	H	H1	h	z-d
80	3"	55	66	22	58	42	3.5	4-M6
100	4"	72	84	25	77	54	4	4-M8
125	5"	95	108	30	78	56	4.5	4-M8
160	6"	65	95	45	96.5	65	5	4-M10
160A	6"	53	71	45	96.5	65	5	4-M10
200	8"	125	104.8	50	110	75	6	4-M10
200A	8"	75	95	56	110	75	6	4-M10
250	10"	100	120	65	117.5	82	6	4-M12
250A	10"	110	130	75	115.5	80	6	4-M12
315	12"	140	165	95	134	90	6	4-M16
320	13"	140	165	95	134	90	6	4-M16
350	14"	130	168	80	145	95	8	4-M16
400	16"	160	185	125	143	95	8	4-M16
450	18"	180	205	140	147	100	8	4-M16
500	20"	200	236	160	161	106	8	4-M20
630	25"	220	258	180	180	115	10	4-M20
800	32"	250	300	210	210	135	12	8-M20
1000	40"	320	370	260	241	150	15	8-M20
1000A	40"	285	330	280	241	150	75	8-M20
1250	50"	400	500	305	256	165	15	8-M20
1400	55"	400	500	305	246	155	15	8-M20
1600	63"	420	520	320	266	175	18	8-M24
2000	80"	450	560	350	290	190	20	8-M30



## Tool Holders

## Tool Bits

白剛刀

HSS Tool Bits

圓形 Round



Size	Overall Length	Overall Length	Overall Length	Size	Overall Length	Overall Length	Overall Length
1.0	100			7.5	100	150	200
1.5	100			8.0	100	150	200
2.0	100			8.5	100	150	200
2.5	100	150	---	9.0	100	150	200
3.0	100	150	---	9.5	100	150	200
3.5	100	150	200	10.0	100	150	200
4.0	100	150	200	12.0	100	150	200
4.5	100	150	200	14.0	100	150	200
5.0	100	150	200	16.0	100	150	200
5.5	100	150	200	18.0	100	150	200
6.0	100	150	200	20.0	100	150	200
3.5	100	150	200	22.0	100	150	200
7.0	100	150	200	24.0	100	150	200

方形 Square



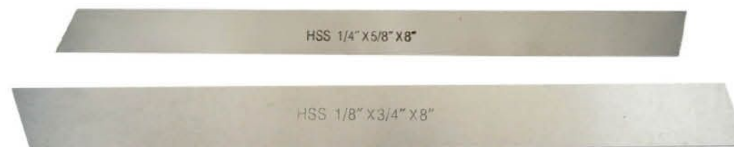
Size	Overall Length	Overall Length	Overall Length	Overall Length	Size	Overall Length	Overall Length	Overall Length	Overall Length
3	100	150	---	---	26	100	150	200	300
4	100	150	200	---	28	100	150	200	300
5	100	150	200	---	30	100	150	200	300
6	100	150	200	---	32	100	150	200	300
8	100	150	200	300	34	100	150	200	300
10	100	150	200	300	36	100	150	200	300
12	100	150	200	300	38	100	150	200	300
14	100	150	200	300	40	100	150	200	300
16	100	150	200	300	42	100	150	200	300
18	100	150	200	300	44	100	150	200	300
20	100	150	200	300	46	100	150	200	300
22	100	150	200	300	48	100	150	200	300
24	100	150	200	300	50	100	150	200	300



## Tool Holders

### Tool Bits

#### 扁形 Flat



Size	Overall Length	Overall Length	Overall Length	Size	Overall Length	Overall Length	Overall Length
3×8	100	150	200	1/8×5/16	4"	6"	8"
5×8	100	150	200	3/16×5/16	4"	6"	8"
6×8	100	150	200	1/4×5/16	4"	6"	8"
3×10	100	150	200	1/8×3/8	4"	6"	8"
5×10	100	150	200	3/16×3/8	4"	6"	8"
6×10	100	150	200	1/4×3/8	4"	6"	8"
8×12	100	150	200	5/16×1/2	4"	6"	8"
10×12	100	150	200	3/8×1/2	4"	6"	8"
6×16	100	150	200	1/4×5/8	4"	6"	8"
8×16	100	150	200	5/16×5/8	4"	6"	8"
12×16	100	150	200	1/2×5/8	4"	6"	8"
6×20	100	150	200	1/4×3/4	4"	6"	8"
8×20	100	150	200	5/16×3/4	4"	6"	8"
10×20	100	150	200	3/8×3/4	4"	6"	8"
12×20	100	150	200	1/2×3/4	4"	6"	8"
16×20	100	150	200	5/8×3/4	4"	6"	8"

#### 梯形 Bevel Type Parting Off Blades



size	size	size
3/32 × 3/8 × 4"	1/8 × 3/4 × 6	3/16 × 1 × 8
3/32 × 1/2 × 4"	1/8 × 7/8 × 5	1/4 × 3/4 × 6
1/8 × 3/8 × 5"	3/16 × 3/4 × 6	1/4 × 1 × 6
1/8 × 1/2 × 4-1/2"	3/16 × 1 × 6	1/4 × 3/4 × 8
1/8 × 5/8 × 6	3/16 × 3/4 × 8	1/4 × 1 × 8

\*All above with different HSS of M42,M35,M2,W4(4341)& 4241 for choice



## Tool Holders

### Die Stocks

板牙铰手

Die Stocks Coated Zinc DIN225



Size	For Taps			Length
	Metric	UNC/UNF	Pipe	
16×5	M1-M2.6	1/16-3/32		160
20×5	M3-M4	1/8-5/32		200
20×7	M4.5-M6	3/16-1/4		200
25×9	M7-M9	5/16-3/8	G1/16	224
30×11	M10-M11	3/8-7/16	G1/8	280
38×14	M12-M14	1/2-9/16		315
38×10	MF12-MF14		G1/4	315
45×18	M16-M20	5/8-3/4		450
45×14	MF16-MF20		G3/8-G1/2	450
55×22	M22-M24	7/8-1"		560
55×16	MF21-MF26		G5/8-G3/4	560
65×25	M27-M36	1-1/8-1-3/8		630
65×18	MF27-MF36		G7/8-G1-11	630
75×30	M39-M42	1-1/2-1-5/8		800
75×20	MF38-MF42		G1-1/8-G1-1/4	800
90×36	M45-M52	1-3/4-2-11		900
90×22	MF45-MF52		G1-1/2	900
105×22	M55-M62		G1-3/4-G2-11	1000



## Tool Holders

### Tap Wrenches

丝锥铰手

Tap Wrenches DIN1814



Size	For Taps			Length
	Metric	UNC/UNF	Pipe	
0#	M1-M8	1/16-5/16	-	125
1#	M3-M10	1/8-3/8	-	180
1#-1/2#	M3-M12	1/8-1/2	G1/8	200
2#	M4-M12	3/16-5/8	G1/8-G3/8	280
3#	M5-M20	1/4-3/4	G1/8-G1/2	375
4#	M10-M27	3/8-1"	G1/8-G3/4	500
5#	M14-M33	5/8-1-1/4	G1/4-G1-11	750
6#	M18-M42	3/4-1-1/2	G1/4-G1-1/4	1000
7#	M25-M52	7/8-2-11	G5/8-G2-1/4	1250

棘轮铰手

Ratchet Tap Holders

Size	For Taps			Length
	Metric	UNC/UNF	Pipe	
1#	M3-M10	1/8-3/8	-	85 mm
2#	M5-M12	7/32-1/2	G1/8	100 mm
10#	M3-M10	1/8-3/8		250 mm
20#	M5-M12	7/32-1/2	G1/8	300 mm



T型铰手

Type T Tap Wrenches

Size	For Taps		Length
	Metric	Inch	
1#	M3-M8	1/8-5/16	70mm
2#	M5-M10	7/32-3/8	80 mm
3#	M6-M12	1/4-1/2	90 mm





## Tool Holders

### Precision Taps

#### 丝锥

#### Precision Taps

DIN352三支一组不等径手用丝锥



Size	Overall Length	Thread Length
M3×0.5	40	11
M3.5×0.6	45	13
M4×0.7	45	13
M4.5×0.75	50	16
M5×0.8	50	16
M6×1	50	19
M7×1	50	19
M8×1.25	56	22
M9×1.25	63	22
M10×1.5	70	24
M11×1.5	70	24
M12×1.75	75	29
M14×2	80	30
M16×2	80	32
M18×2.5	95	40
M20×2.5	95	40
M22×2.5	100	40
M24×3	110	50
M27×3	110	50
M30×3.5	125	56

DIN351/BWS 三支一组惠氏螺纹手用丝锥



Size	Overall Length	Thread Length
1/8-40BSW	40	12

5/32-32BSW	45	14
3/16-24BSW	50	18
7/32-24BSW	50	18
1/4-20BSW	56	22
5/16-18BSW	63	25
3/8-16BSW	70	28
7/16-14BSW	75	30
1/2-12BSW	80	32
9/16-12BSW	80	32
5/8-11BSW	90	36
3/4-10BSW	105	40
7/8-9BSW	110	45
1-8BSW	110	50
1-1/8-7BSW	132	56
1-1/4-7BSW	132	56
1-3/8-6BSW	150	63
1-1/2-6BSW	150	63
1-5/8-5BSW	160	70
1-3/4-5BSW	160	70
1-7/8-4-1/2BSW	190	80
2"-4-1/2BSW	190	80

DIN351/UNC三支一组不等径手用丝锥



Size	Overall Length	Thread Length
No.1-64UNC	32	10
No.2-56UNC	36	11
No.3-48UNC	36	11
No.4-40UNC	40	12
No.5-40UNC	40	12
No.6-32UNC	45	14
No.8-32UNC	45	14
No.10-24UNC	48	16
No.12-24UNC	50	18
1/4-20UNC	56	22
5/16-18UNC	63	25
3/8-16UNC	70	28
7/16-14UNC	75	30

1/2-13UNC	80	32
9/16-12UNC	80	32
5/8-11UNC	90	36
3/4-10UNC	105	40
7/8-9UNC	110	45
1"-8UNC	110	50
1"-1/8-7UNC	132	56
1"-1/4-7UNC	132	56
1"-3/8-6UNC	150	63
1-1/2-6UNC	150	63
1-3/4-5UNC	160	70
2"-4-1/2UNC	190	80

DIN351/UN二支一组不等径手用丝锥



Size	Overall Length	Thread Length
No.3-56UNF	32	10
No.4-48UNF	36	11
No.5-44UNF	40	12
No.6-40UNF	40	12
No.8-36UNF	40	12
No.10-32UNF	45	14
No.12-28UNF	50	16
1/4-28UNF	56	18
5/16-24UNF	56	18
3/8-24UNF	63	18
7/16-20UNF	63	18
1/2-20UNF	63	20
9/16-18UNF	70	20
5/8-18UNF	70	20
3/4-16UNF	80	22
7/8-14UNF	80	22
1"-14UNF	90	22
1"-12UNF	90	22
1-1/8-12UNF	100	28
1-1/4-12UNF	100	28
1-3/8-12UNF	110	32
1-1/2-12UNF	110	32





## Tool Holders

### Precision Taps

DIN 371/M

Meters of thread / Machine Taps



Meters of thread / Fluted Spiral Machine Taps



Meters of thread / Fluted Pointed Machine Taps



Size	Overall Length	Thread Length
M3×0.5	56	11
M3.5×0.6	56	13
M4×0.7	63	13
M5×0.8	70	16
M6×1	80	19
M7×1	80	19
M8×1.25	90	22
M9×1.25	90	22
M10×1.5	100	24

DIN 371/W/BSF

Wyeth thread / Machine Taps



Wyeth thread / Fluted Spiral Machine Taps



Wyeth thread / Fluted Pointed Machine Taps



Size	Overall Length	Thread Length
W1/16-60	40	8
W3/32-48	50	9
W1/8-40	56	11
W5/32-32	63	13
W3/16-24	70	15
W7/32-24	80	16
W1/4-20	80	17

W5/16-18	90	20
W3/8-16	100	22
BSF3/16-32	70	15
BSF1/4-26	80	17
BSF5/16-22	90	20
BSF3/8-20	100	22

DIN 371/UNC/UNF

Unified system thread / Machine Taps



Unified system thread / Fluted Spiral Machine Taps



Unified system thread / Fluted Pointed Machine Taps



Size	Overall Length	Thread Length
No.1-64UNC	40	8
No.2-56UNC	45	9
No.3-48UNC	50	9
No.4-40UNC	56	11
No.5-40UNC	56	11
No.6-32UNC	56	12
No.8-32UNC	63	13
No.10-24UNC	70	15
No.12-24UNC	80	16
1/4-20UNC	80	17
5/16-18UNC	90	20
3/8-16UNC	100	22
No.0-80UNF	40	8
No.1-72UNF	40	8
No.2-64UNF	45	9
No.3-56UNF	50	9
No.4-48UNF	56	11
No.5-44UNF	56	11
No.6-40UNF	56	12
No.8-36UNF	63	13





## Tool Holders

### Round Dies

板牙

Round Dies DIN223



Size	Outside
M3×0.25	20×5mm
M3×0.35	20×5mm
M3×0.5	20×5mm
M3.5×0.6	20×5mm
M4×0.35	20×5mm
M4×0.5	20×5mm
M4×0.7	20×5mm
M5×0.35	20×5mm
M5×0.5	20×5mm
M5×0.75	20×7mm
M5×0.8	20×7mm
M6×0.35	20×5mm
M6×0.5	20×5mm
M6×0.75	20×7mm
M6×1	20×7mm
M8×0.5	25×9mm
M8×0.75	25×9mm

M8×1	25×9mm
M8×1.25	25×9mm
M10×0.5	30×11mm
M10×0.75	30×11mm
M10×1	30×11mm
M10×1.25	30×11mm
M10×1.5	30×11mm
M12×0.5	38×10mm
M12×0.75	38×10mm
M12×1	38×10mm
M12×1.25	38×10mm
M12×1.5	38×10mm
M12×1.75	38×14mm
M14×0.5	38×10mm
M14×0.75	38×10mm
M14×1	38×10mm
M14×1.25	38×10mm
M14×1.5	38×10mm
M14×2	38×14mm
M16×0.5	45×14mm
M16×0.75	45×14mm
M16×1	45×14mm
M16×1.25	45×14mm
M16×1.5	45×14mm
M16×2	45×18mm
M18×0.5	45×14mm
M18×0.75	45×14mm

M18×1	45×14mm
M18×1.25	45×14mm
M18×1.5	45×14mm
M18×2	45×14mm
M18×2.5	45×18mm
M20×0.5	45×14mm
M20×0.75	45×14mm
M20×1	45×14mm
M20×1.25	45×14mm
M20×1.5	45×14mm
M20×2	45×14mm
M20×2.5	45×18mm
M22×0.5	55×16mm
M22×0.75	55×16mm
M22×1	55×16mm
M22×1.5	55×16mm
M22×2	55×16mm
M22×2.5	55×22mm
M24×0.5	55×16mm
M24×0.75	55×16mm
M24×1	55×16mm
M24×1.5	55×16mm
M24×2	55×16mm
M24×3	55×22mm
M25×0.5	55×16mm
M25×0.75	55×16mm

M25×1	55×16mm
M25×1.5	55×16mm
M25×2	55×16mm
M26×0.5	55×16mm
M26×0.75	55×16mm
M26×1	55×16mm
M26×1.5	55×16mm
M26×2	55×16mm
M27×0.5	65×18mm
M27×0.75	65×18mm
M27×1	65×18mm
M27×1.5	65×18mm
M27×2	65×18mm
M27×3	65×25mm
M28×0.5	65×18mm
M28×0.75	65×18mm
M28×1	65×18mm
M28×1.5	65×18mm
M28×2	65×18mm
M30×0.5	65×18mm
M30×0.75	65×18mm
M30×1	65×18mm
M30×1.5	65×18mm
M30×2	65×18mm
M30×3	65×25mm
M30×3.5	65×25mm





## Tool Holders

### Round Dies

DIN223 UNC/UNF



Size	Outside
No.0-80NF	16×5mm
No.1-64NC	16×5mm
No.1-72NF	16×5mm
No.2-56NC	16×5mm
No.3-48NC	16×5mm
No.3-56NF	16×5mm
No.4-40NC	20×5mm
No.4-48NF	20×5mm
No.5-40NC	20×5mm
No.5-44NF	20×5mm
No.6-32NC	20×5mm
No.6-40NF	20×5mm
No.8-32NC	20×5mm
No.8-36NF	20×5mm
1/4-20NC	20×7mm
1/4-28NF	20×7mm
5/16-18NC	25×9mm
5/16-24NF	25×9mm
3/8-16NC	30×11mm
3/8-24NF	30×11mm
7/16-14NC	30×11mm
7/16-20NF	30×11mm
1/2-13NC	38×14mm
1/2-20NF	38×10mm
9/16-12NC	38×14mm
9/16-18NF	38×10mm
5/8-11NC	45×18mm
5/8-18NF	45×14mm
3/4-10NC	45×18mm
3/4-16NF	45×14mm
7/8-9NC	55×22mm
7/8-14NF	55×16mm
1-8NC	55×22mm
1-12NF	55×16mm

1-14NS	55×16mm
1-1/8-7NC	65×25mm
1-1/8-12NF	65×18mm
1-1/4-7NC	65×25mm
1-1/4-12NF	65×18mm
1-3/8-6NC	65×25mm
1-3/8-12NF	65×18mm
1-1/2-6NC	75×30mm
1-1/2-12NF	75×20mm
1-3/4-5NC	90×36mm
2-4-1/2NC	90×36mm

DIN223 BSW



Size	Outside
1/16-60BSW	16×5mm
3/32-48BSW	16×5mm
1/8-40BSW	20×5mm
5/32-32BSW	20×5mm
3/16-24BSW	20×7mm
7/32-24BSW	20×7mm
1/4-20BSW	20×7mm
5/16-18BSW	25×9mm
3/8-16BSW	30×11mm
7/16-14BSW	30×11mm
1/2-12BSW	38×14mm
9/16-12BSW	38×14mm
5/8-11BSW	45×18mm
3/4-10BSW	45×18mm
7/8-9BSW	55×22mm
1-8BSW	55×22mm
1-1/8-7BSW	65×25mm
1-1/4-7BSW	65×25mm
1-3/8-6BSW	65×25mm
1-1/2-6BSW	75×30mm
1-5/8-5BSW	75×30mm
1-3/4-5BSW	90×36mm
2"-4-1/2BSW	90×36mm

DIN382



Size	Outside
M3×0.5	19×5mm
M3.5×0.6	19×5mm
M4×0.7	19×5mm
M4.5×0.75	19×7mm
M5×0.8	19×7mm
M6×1	19×7mm
M7×1	22×9mm
M8×1.25	22×9mm
M9×1.25	22×9mm
M10×1.5	27×11mm
M11×1.5	27×11mm
M12×1.75	36×14mm
M14×2	36×14mm
M16×2	41×18mm
M18×2.5	41×18mm
M20×2.5	41×18mm
M22×2.5	50×22mm
M24×3	50×22mm
M27×3	60×25mm
M30×3.5	60×25mm
M33×3.5	60×25mm
M36×4	60×25mm
M39×4	70×30mm
M42×4.5	70×30mm
M45×4.5	85×36mm
M48×5	85×36mm
M52×5	85×36mm
M3×0.35	19×5mm
M4×0.5	19×5mm
M5×0.5	19×5mm
M6×0.75	19×5mm
M7×0.75	22×9mm
M8×0.75	22×9mm

M8×1	22×9mm
M9×1	22×9mm
M10×1	27×11mm
M11×1	27×11mm
M12×1	36×10mm
M12×1.25	36×10mm
M12×1.5	36×10mm
M14×1	36×10mm
M14×1.25	36×10mm
M14×1.5	36×10mm
M16×1.5	41×14mm
M18×1.5	41×14mm
M18×2	41×14mm
M20×1.5	41×14mm
M20×2	41×14mm
M22×1.5	50×16mm
M22×2	50×16mm
M24×1.5	50×16mm
M24×2	50×16mm
M26×1.5	60×18mm
M27×1.5	60×18mm
M27×2	60×18mm
M28×1.5	60×18mm
M30×1.5	60×18mm

